



Fall  
Winter  
24.1

✻  
PARAMI



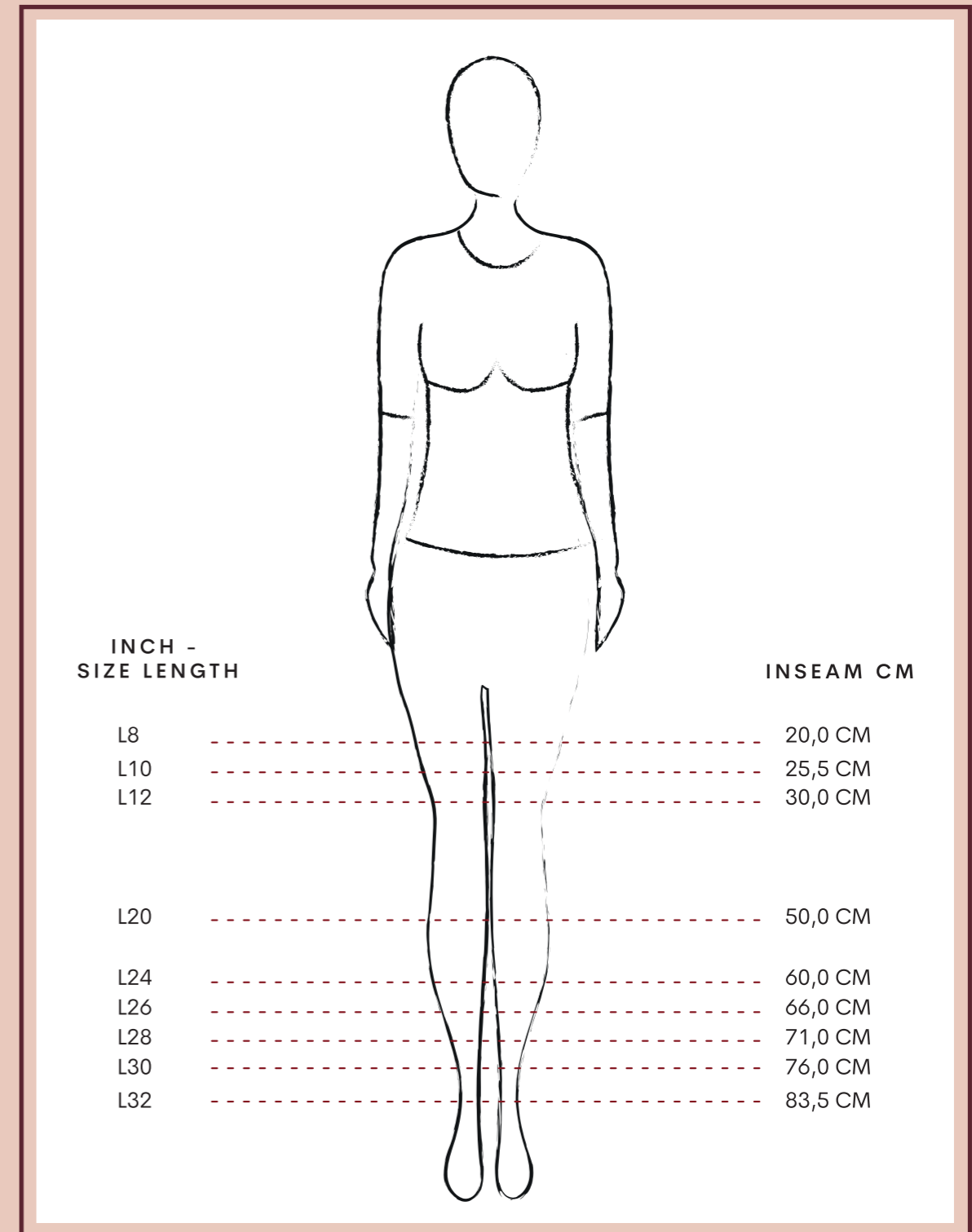
<b>EXTRA SKINNY</b> .....	
SANNE	6
<b>SKINNY</b> .....	
CELINE	8
LIVIA	16
<b>SLIM</b> .....	
ANGIE	17
KIM	24
<b>SLIM CHINO FIT</b> .....	
NOVA	25
CATE	26
<b>CARROT</b> .....	
CARICE	29
<b>TAPERED</b> .....	
BOWIE	34
JILL	44
LOTTE	45
<b>STRAIGHT</b> .....	
VAYEN	46
<b>LOOSE</b> .....	
BOBBY	50
<b>FLARE</b> .....	
JADE	61
<b>WIDE FLARE</b> .....	
CHARLY	75
<b>WIDE LEG</b> .....	
EVE	76
MIRA	80
HANNAH	92
<b>SPECIALS</b> .....	
JOAN	95
JEALEY LONG SKIRT	98

# It's the fit

At Para Mi we have a timeless basic collection of standard fits in different fabrics, colours and washings. Every season this basic collection is supplemented with new custom fits, new fabrics and surprising designs, always in excellent stretch quality and with a number of striking eye-catchers. All our designs are based on fit, style, quality and comfort.



Because of our exclusive focus on ladies trousers, we know what you expect from a pair of trousers. Therefore every pair of Para Mi trousers has a high waist and a comfortable fit, without losing it's fashionable look.



### COMPOSITIONS LIST

<b>CO</b>	COTTON	<b>RCY</b>	RECYCLED POLYESTER
<b>PES</b>	POLYESTER	<b>RUC</b>	RE-USED COTTON
<b>PA</b>	POLYAMIDE	<b>PU</b>	POLYURETHANE
<b>EA</b>	ELASTAN	<b>CLY</b>	LYOCELL
<b>CV</b>	VISCOSE	<b>LI</b>	LINEN
<b>RCP</b>	RECYCLED POLYESTER		

# Sanne fancy DAILY DENIMS L30

Article Number: FW241.212307  
Composition: 88% CO, 10% PES, 2% EA

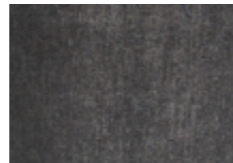
Extra Skinny fit



FW241.212307 - D152 Soft Black



Available washing



D152 Soft Black

# Sanne stud VINTAGE DENIM L30

Article Number: FW241.127215  
Composition: 88% CO, 10% PES, 2% EA

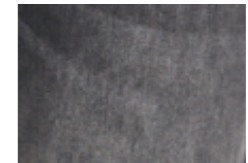
Extra Skinny fit



FW241.127215 - 101 Deep Antra



Available color



101 Deep Antra

# Celine DAILY DENIMS L32/L30

Article Number: NOS.212001

Composition: See sales app for composition and price of each washing!



Skimny fit

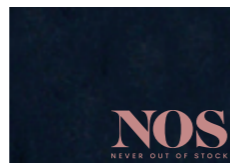
NOS.212001 - D01 Old Blue



### Available washings



D02 Medium Blue



D12 Midnight Dark



D23 Used Black

# Celine DAILY DENIMS L32/L30

Article Number: FW241.212001

Composition: See sales app for composition and price of each washing!

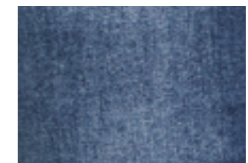


Skimny fit

FW241.212001 - D154 Dark Shadow



### Available washings



D144 Dirty Vintage



D154 Dark Shadow

# Celine BLUEPRINT DENIM L32

Article Number: FW241.020001  
Composition: 89% CO, 8% PES, 3% EA



FW241.020001 - D29 Geo Blue



Available washing



D29 Geo Blue

# Celine HEAVEN UNI L32/L30

Article Number: NOS.001001  
Composition: 67% CO, 29% PES, 4% EA



NOS.001001 - 001 Black



Available colors



001 Black



301 Navy

# Celine SATIN COTTON L32

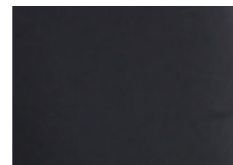
Article Number: FW241.224001  
Composition: 56% LYC, 40% CO, 4% EA



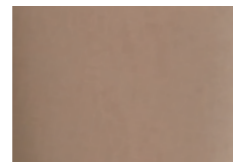
FW241.224001 - 445 Bordeaux



### Available colors



326 Midnight Navy



210 Taupe



445 Bordeaux

# Celine SPECIALS L32

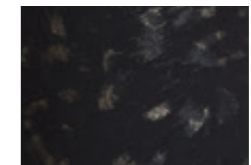
Article Number: FW241.241001  
Composition: 71% CO, 26% PES, 3% EA



FW241.241001 - P151 Gold Leopard



### Available print



P151 Gold Leopard

# Celine zipper COATINGS L32

Article Number: FW241.233313  
Composition: 77% CO, 20% PES, 3% EA



Skinny fit

FW241.233313 - 001 Black



Available color



001 Black

# Celine zipper PRINTED TWILL L32

Article Number: FW241.239313  
Composition: 92% CO, 6% PES, 2% EA



Skinny fit

FW241.239313 - P164 Geo Green Smoke



Available print



P164 Geo Green Smoke

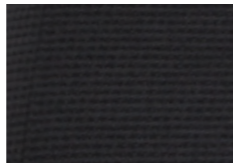


# Livia RIAZA CITY L30

Article Number: FW241.216286  
Composition: 98% PA, 2% EA



Available color



001 Black

FW241.216286 - 001 Black

Skinny fit

# Angie DAILY DENIMS L32/L30

Article Number: NOS.212006  
Composition: See sales app for composition and price of each washing!



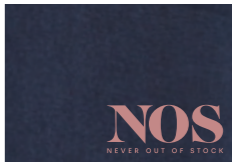
Available washings



D01 Old Blue



D02 Medium Blue



D12 Midnight Dark

NOS.212006 - D12 Mignight Dark

Slim fit

# Angie elastic DAILY DENIMS L32/L30

Article Number: FW241.212320  
Composition: 82% CO, 16% PES, 2% EA



Available washing



D75 Clean Indigo

# Angie fancy DAILY DENIMS L32

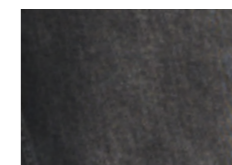
Article Number: FW241.212269  
Composition: See sales app for composition and price of each washing!



Available washings



D123 Pure Indigo



D152 Soft Black

# Angie elastic HEAVEN UNI L32

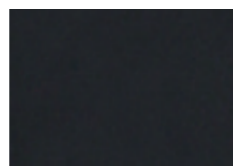
Article Number: FW241.001320  
Composition: 67% CO, 29% PES, 4% EA



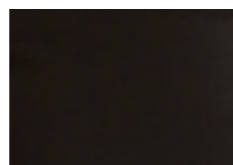
\*Only for color reference. Will be Angie (Elastic) fit for production - 326 Midnight Navy



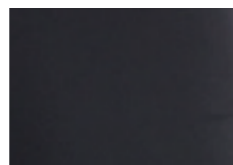
### Available colors



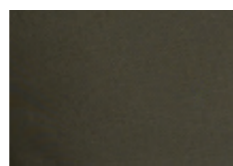
001 Black



101 Deep Antra



326 Midnight Navy



630 Green Smoke

# Angie HEAVEN UNI L32

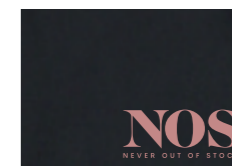
Article Number: NOS.001006  
Composition: 67% CO, 29% PES, 4% EA



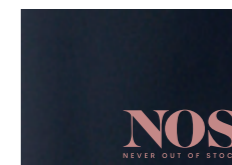
NOS.001006 - 301 Navy



### Available colors



001 Black



301 Navy

# Angie fancy HEAVEN UNI L32

Article Number: FW241.001269  
Composition: 67% CO, 29% PES, 4% EA

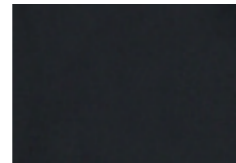


Slim fit

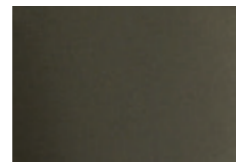
FW241.001269 - 630 Green Smoke



### Available colors



001 Black



630 Green Smoke

# Angie fancy SATIN COTTON L32

Article Number: FW241.224269  
Composition: 56% LYC, 40% CO, 4% EA

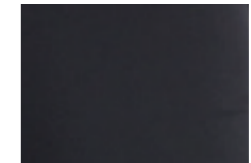


Slim fit

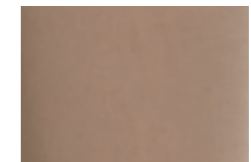
FW241.224269 - 210 Taupe



### Available colors



326 Midnight Navy



210 Taupe

# Kim elastic KNITTED JACQUARDS L30

Article Number: FW241.189228  
Composition: 67% PES, 30% CV, 3% EA



Slim fit

FW241.189228 - P89 Paisley Beige



Available jacquard



P89 Paisley Beige

# Nova KNITTED MELANGE L29

Article Number: FW241.237195  
Composition: 80% PES, 18% CV, 2% EA



Slim chino fit

FW241.237195 - 210 Taupe



Available color



210 Taupe

# Cate SATIN COTTON L30

Article Number: FW241.224274  
Composition: 56% LYC, 40% CO, 4% EA

Slim Chino fit



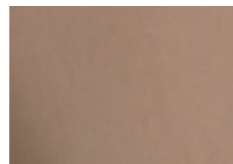
FW241.224274 - 326 Midnight Navy



### Available colors



326 Midnight Navy



210 Taupe

# Cate RIBCORD L30

Article Number: FW241.240274  
Composition: 98% CO, 2% EA

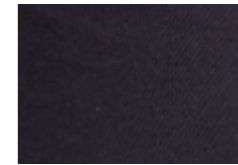
Slim Chino fit



FW241.240274 - 415 Old Pink



### Available colors



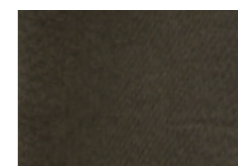
114 Anthracite



210 Taupe



415 Old Pink



630 Green Smoke

# Cate VEGAN LEATHER L30

Article Number: FW241.159274  
Composition: 65% PES, 35% PU

Slim Chino fit



FW241.159274 - 008 Winter White



### Available colors



001 Black



008 Winter White

# Carice carrot DAILY DENIMS L30

Article Number: FW241.212294  
Composition: See sales app for composition and price of each washing!

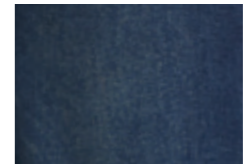
Carrot fit



FW241.212294 - D144 Dirty Vintage



### Available washings



D144 Dirty Vintage



D153 Washed Vintage

# Carice carrot VINTAGE DENIM L30

Article Number: FW241.127294  
Composition: 88% CO, 10% PES, 2% EA



Carrot fit

FW241.127294 - 630 Green Smoke



Available color



630 Green Smoke

# Carice elastic PUNTO L30

Article Number: FW241.124319  
Composition: 65% CV, 30% PA, 5% EA



Carrot fit

FW241.124319 - 001 Black



Available color



001 Black



# Carice pleat FOREVER BLACK L30

Article Number: FW241.218312  
Composition: 87% PES, 13% EA



Carrot fit

FW241.218312 - 001 Black



Available color



001 Black

# Carice cargo PARACHUTE BLACK L30

Article Number: FW241.238317  
Composition: 96% PES, 4% EA



Carrot fit

FW241.238317 - 001 Black



Available color



001 Black

# Bowie DAILY DENIMS L30

Article Number: FW241.212244

Composition: See sales app for composition and price of each washing!

Tapered fit



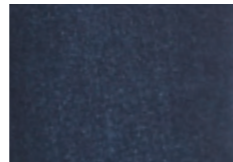
FW241.212244 - D154 Dark Shadow



### Available washings



D27 Dark Used



D154 Dark Shadow

# Bowie destroy DAILY DENIMS L30

Article Number: FW241.212289

Composition: See sales app for composition and price of each washing!

Tapered fit



FW241.212289 - D144 Dirty Vintage



### Available washings



D129 Used Sky



D144 Dirty Vintage

# Bowie belt DAILY DENIMS L30

Article Number: FW241.212259

Composition: See sales app for composition and price of each washing!



### Available washings



D122 Aged Indigo



D155 Frozen Night

FW241.212259 - D155 Frozen Night

Tapered fit

# Bowie braid DAILY DENIMS L30

Article Number: FW241.212306-D129

Composition: 97% CO, 3% EA



### Available washing



D129 Used Sky

FW241.212306 - D129 Used Sky

Tapered fit

# Bowie belt VINTAGE DENIM L30

Article Number: FW241.127259  
Composition: 88% CO, 10% PES, 2% EA



Tapered fit

FW241.127259 - 630 Green Smoke



Available color



630 Green Smoke

# Bowie belt MORELLA L30

Article Number: FW241.223259  
Composition: 64% CO, 33% CV, 3% EA



Tapered fit

FW241.223259 - 210 Taupe



Available color



210 Taupe

# Bowie dart MORELLA L30

Article Number: FW241.223316  
Composition: 64% CO, 33% CV, 3% EA



Tapered fit

FW241.223316 - 235 Oyster Grey



Available color



235 Oyster

# Bowie belt BLUEPRINT DENIM L30

Article Number: FW241.020259  
Composition: 89% CO, 8% PES, 3% EA

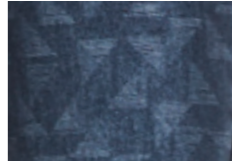


Tapered fit

FW241.020259 - D29 Geo Blue



Available washing



D29 Geo Blue

# Bowie COATINGS L30

Article Number: FW241.233244  
Composition: 71% CO, 25% PES, 4% EA



FW241.233244 - 900 Metallic Silver



Available color



900 Metallic Silver

# Bowie SPECIALS L30

Article Number: FW241.241244  
Composition: 67% CO, 30% PES, 3% EA



FW241.241244 - P152 Gold Sparkling



Available print



P152 Gold Sparkling

# Jill cargo VINTAGE DENIM L30

Article Number: FW241.127245  
Composition: 88% CO, 10% PES, 2% EA

Tapered fit



FW241.127245 - 218 Burnt Henna



Available color



218 Burnt Henna

# Lotte cargo FOREVER BLACK L30

Article Number: FW241.218224  
Composition: 87% PES, 13% EA

Tapered fit



FW241.218224 - 001 Black



Available color



001 Black

# Vayen DAILY DENIMS L32

Article Number: FW241.212263

Composition: See sales app for composition and price of each washing!

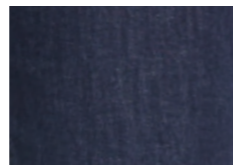
Straight fit



FW241.212263 - D153 Washed Vintage



### Available washings



D123 Pure Indigo



D153 Washed Vintage

# Vayen RIBCORD L32

Article Number: FW241.240263

Composition: 98% CO, 2% EA

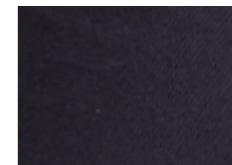
Straight fit



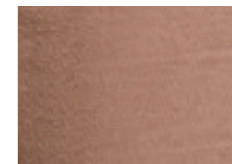
FW241.240263 - 210 Taupe



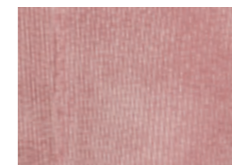
### Available colors



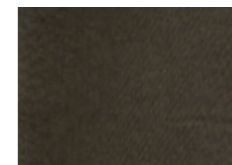
114 Anthracite



210 Taupe



415 Old Pink



630 Green Smoke



# Vayen city CREPE L30

Article Number: FW241.199268  
Composition: 97% PES, 3% EA

Straight fit



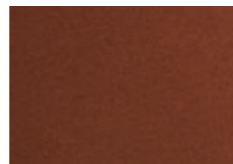
FW241.199268 - 608 Emerald Green



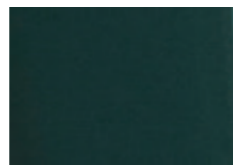
### Available colors



001 Black



231 Deep Camel



608 Emerald Green

# Bobby DAILY DENIMS L30

Article Number: NOS.212091  
Composition: See sales app for composition and price of each washing!

Loose fit



FW241.212091 - D97 Used Air Blue



### Available washings



D01 Old Blue



D02 Medium Blue



D23 Used Black



D97 Used Air Blue

# Bobby DAILY DENIMS L30

Article Number: FW241.212091

Composition: See sales app for composition and price of each washing!



Loose fit

FW241.212091 - D153 Washed Vintage



### Available washings



D75 Clean Indigo



D153 Washed Vintage



D154 Dark Shadow



D155 Frozen Night

# Bobby elastic DAILY DENIMS L30

Article Number: FW241.212239-D122

Composition: 93% CO, 5% RCY, 2% EA



Loose fit

FW241.212239 - D122 Aged Indigo



### Available washing



D122 Aged Indigo

# Bobby embroidery

## DAILY DENIMS L30

Article Number: FW241.212243-D152  
Composition: 88% CO, 10% PES, 2% EA

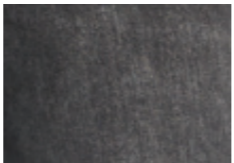


Loose fit

FW241.212243 - D152 Soft Black



### Available washing



D152 Soft Black

# Bobby VINTAGE DENIM L30

Article Number: FW241.127091  
Composition: 88% CO, 10% PES, 2% EA



Loose fit

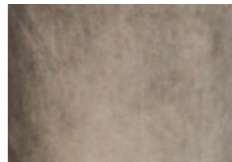
FW241.127091 - 101 Deep Antra



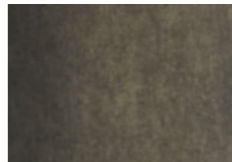
### Available colors



101 Deep Antra



210 Taupe



630 Green Smoke

# Bobby MORELLA L30

Article Number: FW241.223091  
Composition: 64% CO, 33% CV, 3% EA

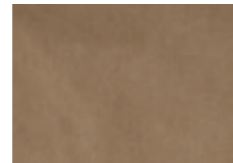


Loose fit

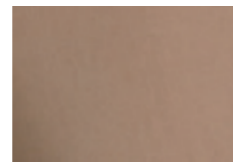
FW241.223091 - 415 Old Pink



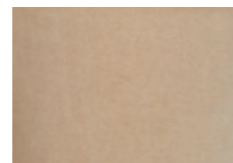
### Available colors



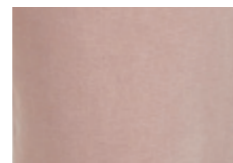
204 Camel



210 Taupe



235 Oyster



415 Old Pink

# Bobby DENIM STRIPE L30

Article Number: FW241.234091  
Composition: 88% CO, 10% PES, 2% EA



Loose fit

FW241.234091 - D32 Stripe Blue



### Available washing



D32 Stripe Blue

# Bobby HEAVEN UNI L30

Article Number: FW241.001091 + NOS.001091  
Composition: 67% CO, 29% PES, 4% EA

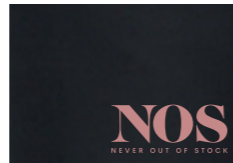
Loose fit



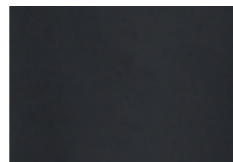
FW241.001091 - 233 Brown



### Available colors



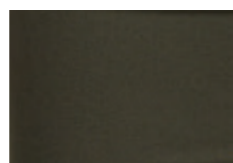
001 Black



101 Deep Antra



233 Brown



630 Green Smoke

# Bobby VINTAGE CORDUROY L30

Article Number: FW241.104091  
Composition: 98% CO, 2% EA

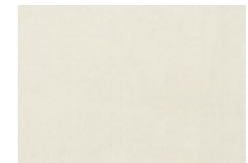
Loose fit



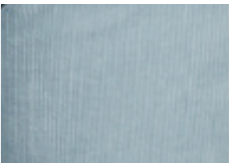
FW241.104091 - 601 Pale Green



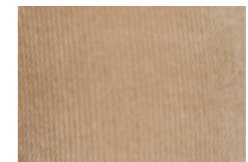
### Available colors



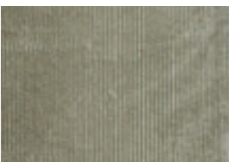
003 Off White



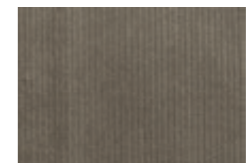
323 Blue Ice



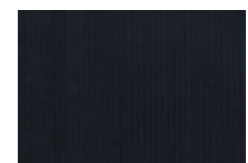
007 Beige Marble



601 Pale Green



210 Taupe



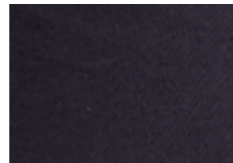
301 Navy

# Bobby RIBCORD L30

Article Number: FW241.240091  
Composition: 98% CO, 2% EA



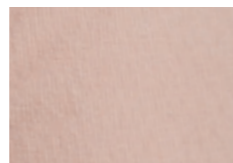
### Available colors



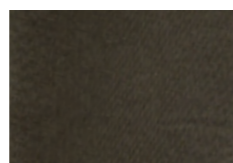
114 Anthracite



210 Taupe



415 Old Pink



630 Green Smoke

# Bobby chino FLOWY RIBCORD L30

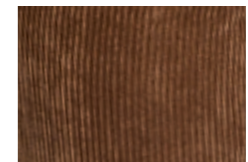
Article Number: FW241.235315  
Composition: 90% PES, 10% EA



### Available colors



007 Beige Marble



204 Camel



415 Old Pink



630 Green Smoke

# Bobby COATINGS L30

Article Number: FW241.233091  
Composition: 71% CO, 25% PES, 4% EA



Loose fit

FW241.233091 - 900 Metallic Silver



Available color



900 Metallic Silver

# Jade braid DAILY DENIMS L32

Article Number: FW241.212308-D155  
Composition: 88% CO, 10% PES, 2% EA.



Flare fit

FW241.212308 - D155 Frozen Night



Available washing



D155 Frozen Night

# Jade DAILY DENIMS L32

Article Number: NOS.212070

Composition: See sales app for composition and price of each washing!



Available washings



D23 Used Black



D97 Used Air Blue

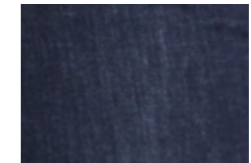
# Jade DAILY DENIMS L32

Article Number: FW241.212070

Composition: See sales app for composition and price of each washing!



Available washings



D123 Pure Indigo



D129 Used Sky



# Jade VINTAGE DENIM L32

Article Number: FW241.127070  
Composition: 88% CO, 10% PES, 2% EA

Flare fit



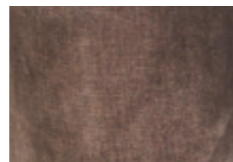
FW241.127070 - 218 - Burnt Henna



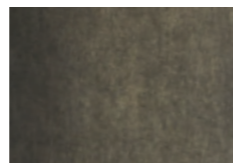
### Available colors



101 Deep Antra



218 Burnt Henna



630 Green Smoke

# Jade MORELLA L32

Article Number: FW241.223070  
Composition: 64% CO, 33% CV, 3% EA

Flare fit



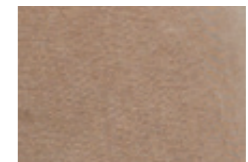
FW241.223070 - 204 - Camel



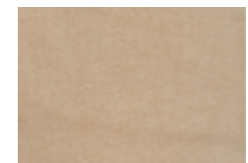
### Available colors



204 Camel



210 Taupe



235 Oyster Grey

# Jade WINTER STRIPES L32

Article Number: FW241.243070  
Composition: 97% CO, 3% EA



Flare fit

FW241.243070 - S07 Black Small



Available color



S07 Black Small

# Jade VINTAGE CORDUROY L32

Article Number: FW241.104070  
Composition: 98% CO, 2% EA

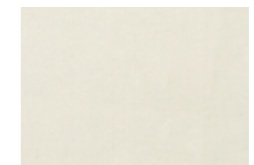


Flare fit

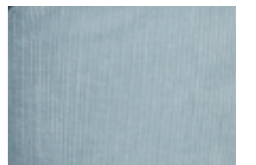
FW241.104070 - 007 Beige Marble



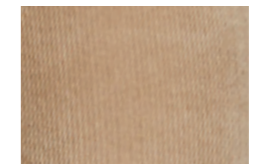
Available colors



003 Off White



323 Blue Ice



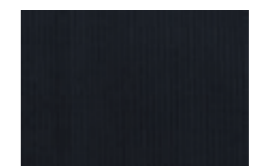
007 Beige Marble



601 Pale Green



210 Taupe



301 Navy

# Jade RIBCORD L32

Article Number: FW241.240070  
Composition: 98% CO, 2% EA

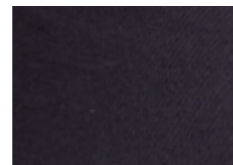


Flare fit

FW241.240070 - 630 Green Smoke



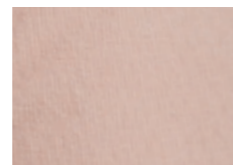
### Available colors



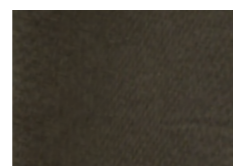
114 Anthracite



210 Taupe



415 Old Pink



630 Green Smoke

# Jade elastic TWILL JERSEY L32

Article Number: FW241.220190  
Composition: 95% PES, 5% EA



Flare fit

FW241.220190 - 001 Black



### Available colors



001 Black



301 Navy



204 Camel



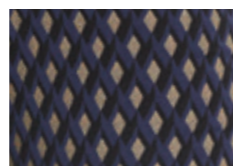
412 Maroon

# Jade elastic FANCY JACQUARD L32

Article Number: FW241.214190  
Composition: 61% CO, 34% PES, 5% EA



Available jacquard



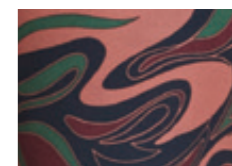
P111 Geo Jacquard

# Jade elastic TECH PRINTS L32

Article Number: FW241.242190  
Composition: 87% PES, 13% EA



Available print



P142 Oil Print

# Jade fringe PRINTED TWILL L32

Article Number: FW241.239248  
Composition: 92% CO, 6% PES, 2% EA

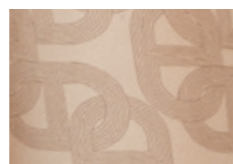


Flare fit

FW241.239248 - P165 Chain Beige



Available print



P165 Chain Beige

# Jade elastic PUNTO L32

Article Number: FW241.124190  
Composition: 65% CV, 30% PA, 5% EA



Flare fit

FW241.124190 - 001 Black



Available color



001 Black

# Jade SPECIALS L32

Article Number: FW241.241070  
Composition: 71% CO, 26% PES, 3% EA

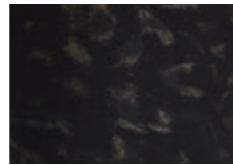
Flare fit



FW241.241070 - P151 Gold Leopard



Available print



P151 Gold Leopard

# Charly city TWILL JERSEY L32

Article Number: FW241.220318  
Composition: 95% PES, 5% EA

Wide flare fit



FW241.220318 - 412 Maroon



Available colors



001 Black



412 Maroon

# Eve DAILY DENIMS L32

Article Number: NOS.212136-D01  
Composition: 82% CO, 16% PES, 2% EA



Wide leg fit

NOS.212136 - D01 Old Blue



Available washing



D01 Old Blue

# Eve DAILY DENIMS L32

Article Number: FW241.212136  
Composition: See sales app for composition and price of each washing!



Wide leg fit

FW241.212136 - D122 Aged Indigo



Available washings



D75 Clean Indigo



D122 Aged Indigo

# Eve pleat CREPE L32

Article Number: FW241.199314  
Composition: 97% PES, 3% EA



Wide leg fit

FW241.199314 - 001 Black



Available color



001 Black

# Eve pleat CITY PROGRAM L32

Article Number: FW241.232314  
Composition: 64% PES, 34% CV, 2% EA

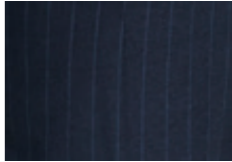


Wide leg fit

FW241.232314 - P163 Pinstripe Navy



Available color



P163 Pinstripe Navy



# Mira stud DAILY DENIMS L32

Article Number: FW241.212310-D40  
Composition: 98% CO, 2% EA

Wide leg fit



FW241.212310 - D40 Washed Indigo



Available washing



D40 Washed Indigo

# Mira city DAILY DENIMS L32

Article Number: FW241.212225  
Composition: 62% CO, 24% PES, 12% CV, 2% EA

Wide leg fit



FW241.212225 - D156 Indigo Blue



Available washing



D156 Indigo Blue

# Mira pocket DAILY DENIMS L32

Article Number: FW241.212290-D153  
Composition: 97% CO, 3% EA



Wide leg fit

FW241.212290 - D153 Washed Vintage



Available washing



D153 Washed Vintage

# Mira cargo PARACHUTE BLACK L32

Article Number: FW241.238304  
Composition: 96% PES, 4% EA



Wide leg fit

FW241.238304 - 001 Black



Available color



001 Black

# Mira elastic FLOWY RIBCORD L32

Article Number: FW241.235206  
Composition: 90% PES, 10% EA

Wide leg fit



FW241.235206 - 415 Old Pink



### Available colors



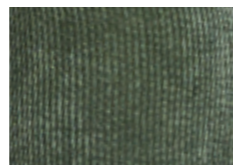
007 Beige Marble



204 Camel



415 Old Pink



630 Green Smoke

# Mira elastic TWILL JERSEY L32

Article Number: FW241.220206  
Composition: 95% PES, 5% EA

Wide leg fit



FW241.220206 - 204 camel



### Available colors



001 Black



301 Navy



204 Camel



412 Maroon

# Mira elastic CREPE L32

Article Number: FW241.199206  
Composition: 97% PES, 3% EA

Wide leg fit



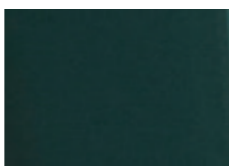
FW241.199206 - 445 Bordeaux



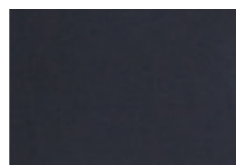
### Available colors



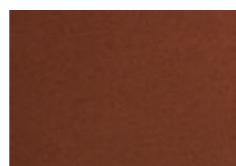
001 Black



608 Emerald Green



301 Navy



231 Deep Camel



445 Bordeaux

# Mira elastic KNITTED MELANGE L32

Article Number: FW241.237206  
Composition: 80% PES, 18% CV, 2% EA

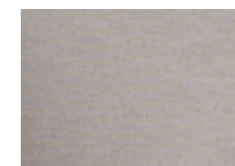
Wide leg fit



FW241.237206 - 210 Taupe



### Available color



210 Taupe

# Mira elastic KNITTED JACQUARDS L32

Article Number: FW241.189206  
Composition: 61% PES, 29% CV, 9% LUREX, 1% EA

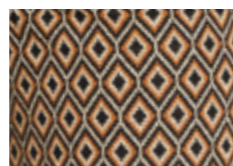
Wide leg fit



FW241.189206 - P45 Geo Knit



Available jacquard



P45 Geo Knit

# Mira elastic TECH PRINTS L32

Article Number: FW241.242206  
Composition: 87% PES, 13% EA

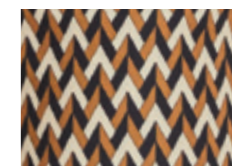
Wide leg fit



FW241.242206 - P156 Herringbone Camel



Available print



P156 Herringbone Camel

# Mira elastic PUNTO L32

Article Number: FW241.124206  
Composition: 65% CV, 30% PA, 5% EA



Wide leg fit

FW241.124206 - 001 Black



Available color



001 Black

# Mira pleat CITY PROGRAM L32

Article Number: FW241.232311  
Composition: 64% PES, 23% CV, 3% EA



Wide leg fit

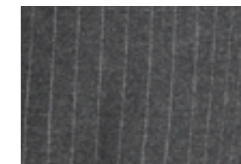
FW241.232311 - P1173 Pinstripe Anthracite



Available prints



108 Light Grey



P173 Pinstripe Anthracite

# Hannah KNITTED JACQUARDS L32

Article Number: FW241.189018  
Composition: 67% PES, 30% CV, 3% EA



Wide leg fit

FW241.189018 - P159 Geo Beige



Available jacquard



P159 Geo Beige

# Hannah elastic WOVEN JACQUARDS L32

Article Number: FW241.244122  
Composition: 63% PES, 34% CV, 3% EA



Wide leg fit

FW241.244122 - P55 Check Taupe



Available jacquards



P55 Check Taupe



P161 Check Overdyed

# Hannah CITY PROGRAM L32

Article Number: FW241.232122  
Composition: 64% PES, 34% CV, 2% EA



Wide leg fit

FW241.189018 - P162 Pinstripe Beige



Available jacquard



P162 Pinstripe Beige

# Joan Blazer KNITTED JACQUARDS

Article Number: FW241.189203  
Composition: 66% PES, 33% CV, 1% EA



Specials

FW241.189203 - P89 Paisley Beige



Available jacquard



P89 Paisley Beige



# Joan Blazer TWILL JERSEY

Article Number: FW241.220203  
Composition: 95% PES, 5% EA



FW241.220203 - 001 Black



### Available colors



001 Black



301 Navy

Specials

# Joan Blazer WOVEN JACQUARDS

Article Number: FW241.244203  
Composition: 63% PES, 34% CV, 3% EA



FW241.244203 - P161 Check Overdyed



### Available jacquards



P55 Check Taupe



P161 Check Overdyed

Specials

# Jealey long skirt DAILY DENIMS CB 95 CM

Article Number: FW241.212309

Composition: See sales app for composition and price of each washing!

Specials



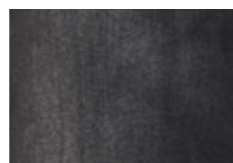
FW241.212309 - D45 Used Grey



### Available washings



D27 Dark Used



D45 Used Grey

# Jealey long skirt FLOWY RIBCORD CB 95 CM

Article Number: FW241.235309

Composition: 90% PES, 10% EA

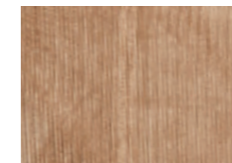
Specials



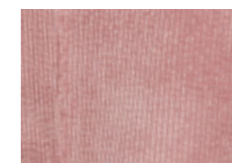
FW241.235309 - 007 Beige Marble



### Available colors



007 Beige Marble



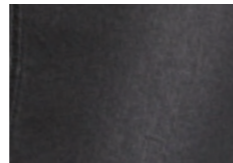
415 Old Pink

# Jealey long skirt COATINGS CB 95 CM

Article Number: FW241.233309  
Composition: 77% CO, 20% PES, 3% EA



Available color



001 Black

FW241.233309 - 001 Black

Specials

## A conscious choice

Sustainable business is more than just a trend. Doing business in a socially responsible way, is an important part of the Para Mi business operation. Sustainable business, or corporate social responsibility, can be done in many different ways. Good for the environment, society, people and animals; we cannot ignore it. We find it important and see it as part of our business.

For Para Mi sustainable business means that we choose a combination of four important pillars: we want to 'do good' for people, the environment, society and animals.



## Think about tomorrow

All production partners, with whom we work, have the same aspiration as we do to minimize energy and water consumption. We are constantly looking for and applying energysaving developments.

The laundries where our jeans are washed re-use 75% of the water used in the production process. That's a pretty high percentage. In addition, they make very conscious use of certain chemicals and only use them when necessary. Our fabric suppliers have various ecological and sustainability labels.







[www.para-mi.com](http://www.para-mi.com)

[sales@para-mi.com](mailto:sales@para-mi.com) | [info@para-mi.com](mailto:info@para-mi.com) | 0031 (0)20 811 0334