

SPRING SUMMER 25.1




PARAMI
it's the fit



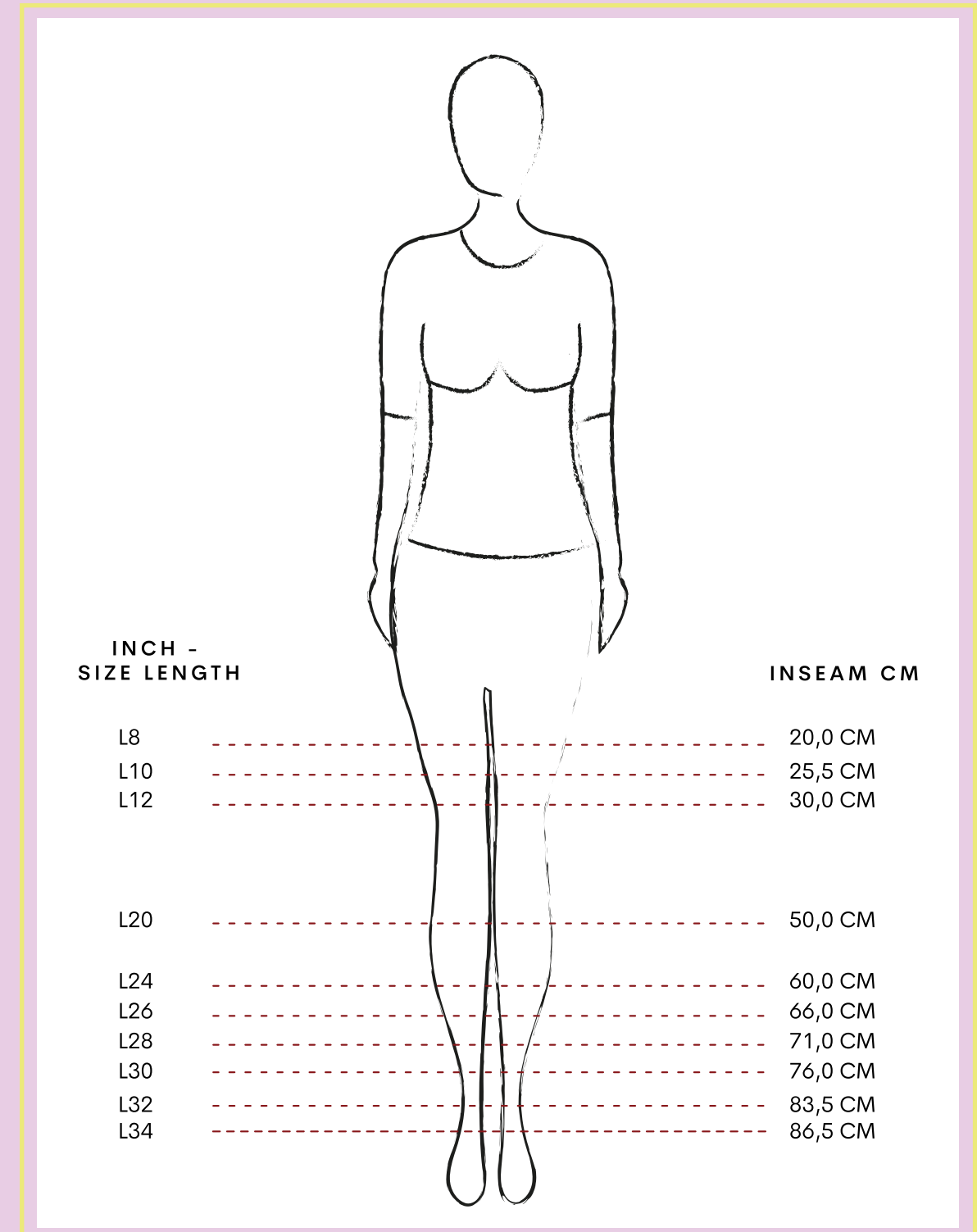
EXTRA SKINNY	
SANNE		5
SKINNY	
AMBER		6
CELINE		7
SLIM	
ANGIE		8
KIM		10
SLIM CHINO	
CINDY		14
CARROT	
CARICE		15
TAPERED	
BOWIE		17
JILL		24
STRAIGHT	
VAYEN		25
LOOSE	
BOBBY		28
KICK FLARE	
MILA		35
FLARE	
JADE		37
WIDE LEG	
EVE		47
MIRA		55
HANNAH		67
CLOË		70
SPECIALS	
JULY		74
LISA		76

It's the fit

At Para Mi we have a timeless basic collection of standard fits in different fabrics, colours and washings. Every season this basic collection is supplemented with new custom fits, new fabrics and surprising designs, always in excellent stretch quality and with a number of striking eye-catchers. All our designs are based on fit, style, quality and comfort.



Because of our exclusive focus on ladies trousers, we know what you expect from a pair of trousers. Therefore every pair of Para Mi trousers has a high waist and a comfortable fit, without losing it's fashionable look.



COMPOSITIONS LIST

CO	COTTON	RCY	RECYCLED POLYESTER
PES	POLYESTER	RUC	RE-USED COTTON
PA	POLYAMIDE	REG	REGENERATED COTTON
EA	ELASTAN	PU	POLYURETHANE
CV	VISCOSE	CLY	LYOCELL
RCP	RECYCLED POLYESTER	LI	LINEN
		LRX	METALLIC YARNS

Sanne DAILY DENIMS L28

Article Number: SS251.212169
Composition: 98% CO, 2% EA



Extra Skinny fit

SS251.212169 - D143 Vintage Blue



Available washing



D143 Vintage Blue

Amber DAILY DENIMS L28

Article Number: SS251.212003
Composition: 92% CO, 6% PES, 2% EA



Skinny fit

SS251.212003 - D42 Medium Used



Available washing



D42 Medium Used

Celine DAILY DENIMS L30/L32

Article Number: NOS.212001

Composition: See the sales app to find which colors and washings are available in more inseams.



Skimny fit



NOS.212001 - D97 Used Air Blue



Available washings



D01 Old Blue



D23 Used Black



D02 Medium Blue



D97 Used Air Blue



D12 Midnight Dark

Angie DAILY DENIMS L30/L32

Article Number: NOS.212006

Composition: See the sales app to find which colors and washings are available in more inseams.



Slim fit



NOS.212006 - D02 Medium Blue



Available washings



D01 Old Blue



D02 Medium Blue



D12 Midnight Dark

Angie sparkle DAILY DENIMS L32

Article Number: SS251.212333
Composition: 92% CO, 6% PES, 2% EA



Slim fit

SS251.212333 - D42 Medium Used



Available washing



D42 Medium Used

Kim embroidery DAILY DENIMS L29

Article Number: SS251.212266
Composition: 50% CO, 10% REG CO, 39% CLY, 1% EA



Slim fit

SS251.212266 - D179 Cosmic Blue



Available washing

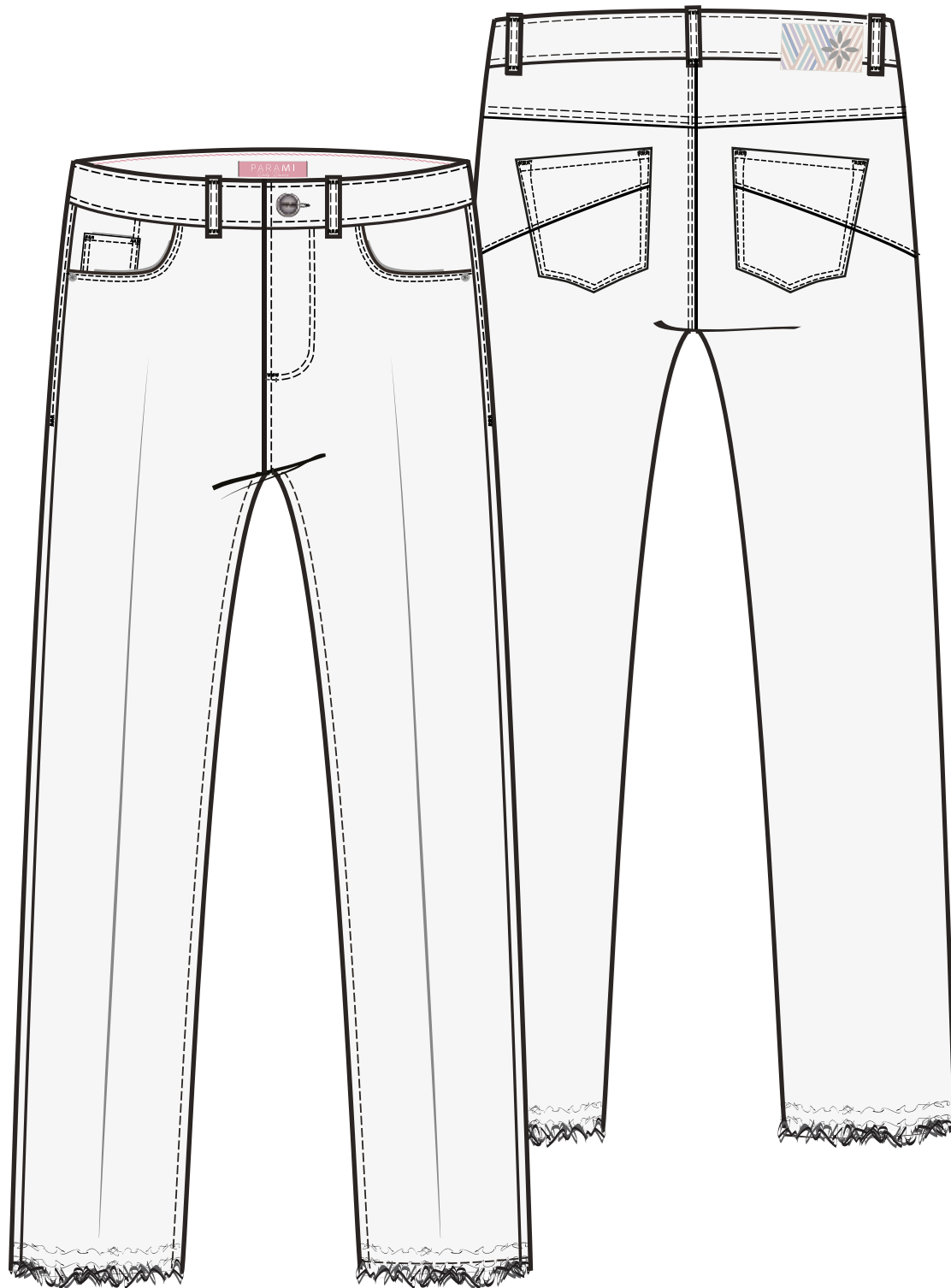


D179 Cosmic Blue

Kim DAILY DENIMS L29

Article Number: SS251.212272
Composition: 94% CO, 5% PES, 1% EA

Slim fit



Available washing

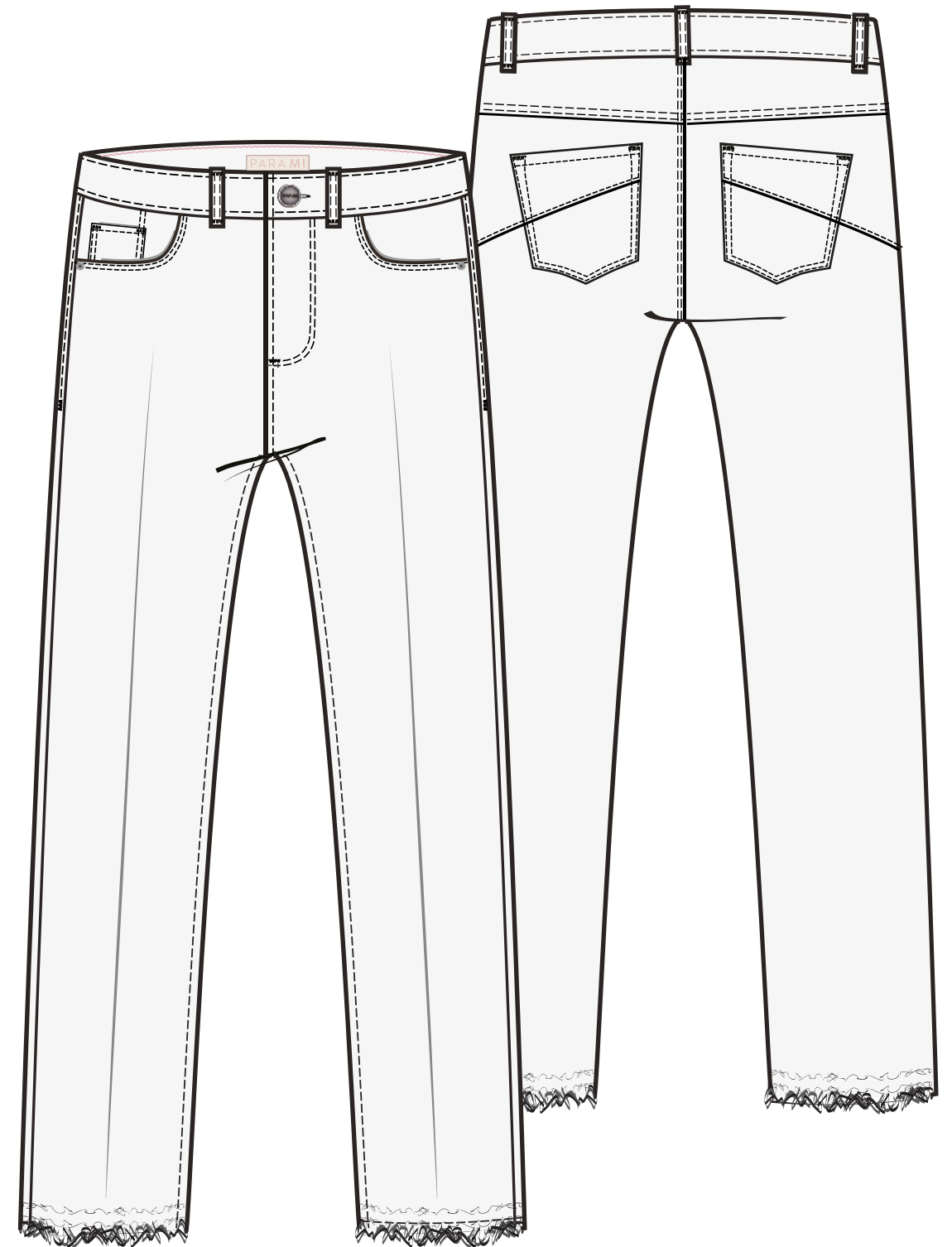


D126 Ocean Blue

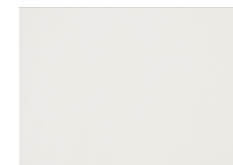
Kim COLOR DENIM L29

Article Number: SS251.005272
Composition: 91% CO, 6% PES, 3% EA

Slim fit



Available color



002 White

Kim embroidery COLOR DENIM L29

Article Number: SS251.005266
Composition: 91% CO, 6% PES, 3% EA



Available colors



227 Beige



402 Misty Rose

SS251.005266 - 402 Misty Rose

Slim fit

Cindy CITY TECH L28

Article Number: SS251.252342
Composition: 87% PES, 13% EA



Available colors



215 Light Taupe



435 Magenta

SS251.252342 - 435 Magenta

(Slim) chino fit

Carice DAILY DENIMS L29

Article Number: SS251.212294
Composition: 50% CO, 10% REG CO, 39% CLY, 1% EA



Carrot fit



SS251.212294 - D179 Cosmic Blue



Available washing



D179 Cosmic Blue

Carice belt CITY TECH L29

Article Number: SS251.252341
Composition: 87% PES, 13% EA

Carrot fit



SS251.252341 - 327 Cloud Blue



Available color



327 Cloud Blue

Bowie DAILY DENIMS L30

Article Number: SS251.212244
Composition: 98% CO, 2% EA



Tapered fit

SS251.212244 - D143 Vintage Blue



Available washings



D143 Vintage Blue



D175 Light Grey Denim

Bowie belt DAILY DENIMS L30

Article Number: SS251.212259
Composition: 94% CO, 5% PES, 1% EA



Tapered fit

SS251.212259 - D126 Ocean Blue



Available washing



D126 Ocean Blue

Bowie destroy DAILY DENIMS L30

Article Number: SS251.212289
Composition: 50% CO, 10% REG CO, 39% CLY, 1% EA



Tapered fit



SS251.212289 - D179 Cosmic Blue



Available washing



D179 Cosmic Blue

Bowie COLOR DENIM L30

Article Number: SS251.005244
Composition: 91% CO, 6% PES, 3% EA

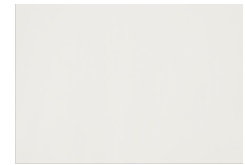
Tapered fit



SS251.005244 - 320 Dusty Blue



Available colors



002 White



227 Beige



320 Dusty Blue



515 Soft Yellow

Bowie belt MORELLA L30

Article Number: SS251.223259
Composition: 64% CO, 33% CV, 3% EA

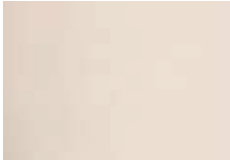


Tapered fit

SS251.223259 - 230 Sand



Available color



230 Sand

Bowie dart MORELLA L30

Article Number: SS251.223316
Composition: 64% CO, 33% CV, 3% EA

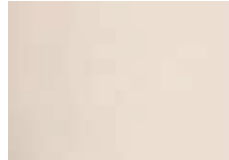


Tapered fit

SS251.223316 - 637 Light Olive



Available colors



230 Sand



637 Light Olive

Bowie cargo FLOWY SATIN L30

Article Number: SS251.230303
Composition: 60% RCP, 38% PES, 2% EA



Tapered fit



SS251.230303 - 103 Silver Mist



Available colors



103 Silver Mist



637 Light Olive

Jill cargo CASUAL CARGO L29

Article Number: SS251.249245
Composition: 56% CLY, 40% CO, 4% EA

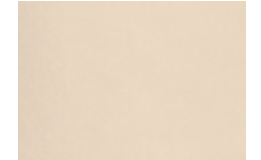
Tapered fit



SS251.249245 - 014 Cream



Available colors



014 Cream



637 Light Olive

Vayen DAILY DENIM L32

Article Number: SS251.212263
Composition: 98% CO, 2 % EA

Straight fit



SS251.212263 - D143 Vintage Blue



Available washing



D143 Vintage Blue

Vayen turn-up DAILY DENIMS L29

Article Number: SS251.212339
Composition: 97% CO, 3% EA

Straight fit



SS251.212339 - D94 Summer Blue



Available washing



D94 Summer Blue

Vayen MORELLA L32

Article Number: SS251.223263
Composition: 64% CO, 33% CV, 3% EA



Available colors



230 Sand



702 Sage Flower

Bobby DAILY DENIMS L30

Article Number: NOS.212091
Composition: See sales app for composition and price of each washing!



Available washings



D01 Old Blue



D02 Medium Blue



D23 Used Black



D97 Used Air Blue

Bobby DAILY DENIMS L30

Article Number: SS251.212091

Composition: See sales app for composition and price of each washing!



Available washings



D16 Used Light Blue



D175 Light Grey Denim



D42 Medium Used



D143 Vintage Blue



D108 Stone Blue

Bobby COLOR DENIM L30

Article Number: SS251.005091

Composition: 91% CO, 6% PES, 3% EA



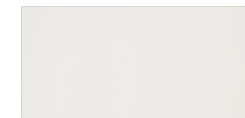
Available colors



001 Black



320 Dusty Blue



002 White



402 Misty Rose



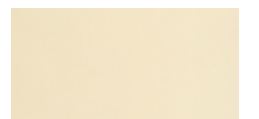
014 Cream



431 Coral Peach



215 Light Taupe



515 Soft Yellow



227 Beige

Bobby MORELLA L30

Article Number: SS251.223091
Composition: 64% CO, 33% CV, 3% EA

Loose fit



SS251.223091 - 617 Light Bottle



Available colors



230 Sand



637 Light Olive



417 Mellow Rose



702 Sage Flower



617 Light Bottle

Bobby COATED PRINTS L30

Article Number: SS251.125091
Composition: 92% CO, 6% PES, 2% EA

Loose fit



SS251.125091 - P179 Metallic Leafs



Available prints



P179 Metallic Leafs

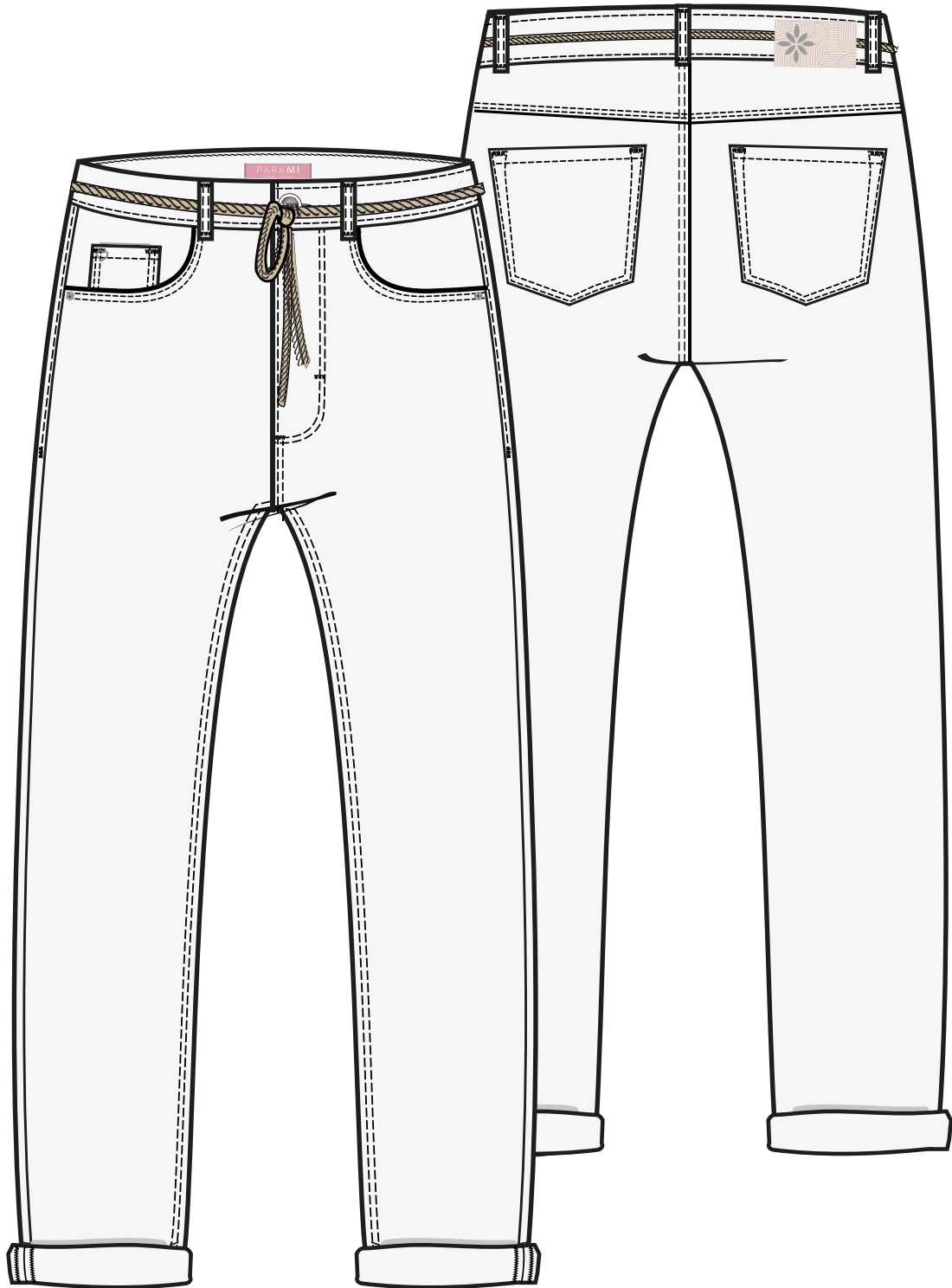


P181 Metallic Zebra

Bobby COATINGS L30

Article Number: SS251.233091
Composition: 90% CO, 7% PES, 3% EA

Loose fit



Available colors



902 Metallic Gold



905 Metallic Pink



907 Metallic Denim

Bobby chino PUNTO L30

Article Number: SS251.124315
Composition: 65% CV, 30% PA, 5% EA

Loose fit



SS251.124315 - 230 Sand



Available color



230 Sand

Mila mini flare DAILY DENIMS L28

Article Number: SS251.212337

Composition: See sales app for composition and price of each washing!



Kick flare fit

SS251.212337 - D123 Pure Indigo



Available washings



D123 Pure Indigo



D143 Vintage Blue



D179 Cosmic Blue

Mila mini flare COLOR DENIM L28

Article Number: SS251.005337

Composition: 91% CO, 6% PES, 3% EA

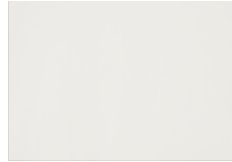


Kick flare fit

SS251.212337 - 215 Light Taupe



Available colors



002 White



215 Light Taupe

Jade DAILY DENIMS L32

Article Number: NOS.212070

Composition: See sales app for composition and price of each washing!

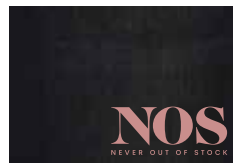


Flare fit

NOS.212070 - D97 Used Air Blue



Available washings



D23 Used Black



D97 Used Air Blue

Jade DAILY DENIMS L32/L34

Article Number: SS251.212070

Composition: See the sales app to find which colors and washings are available in more inseams.



Flare fit

SS251.212070 - D42 Medium Used



Available washings



D42 Medium Used



D108 Stone Blue



D175 Light Grey Denim



D180 Iceberg Blue

Jade pocket DAILY DENIMS L32

Article Number: SS251.212321

Composition: See sales app for composition and price of each washing!

Flare fit



SS251.212321 - D94 Summer Blue



Available washings



D94 Summer Blue



D175 Light Grey Denim

Jade COLOR DENIM L32/L34

Article Number: SS251.005070

Composition: 91% CO, 6% PES, 3% EA

Flare fit



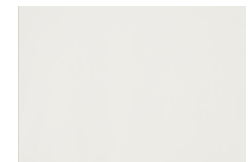
SS251.005070 - 002 White



Available colors



001 Black



002 White



014 Cream



215 Light Taupe

Jade pocket COLOR DENIM L32

Article Number: SS251.005321
Composition: 91% CO, 6% PES, 3% EA



Flare fit

SS251.005321 - 014 Cream



Available color



014 Cream

Jade SPRING STRIPES L32

Article Number: SS251.205070
Composition: 63% CO, 34% PES, 3% EA



Flare fit

SS251.205070 - P153 Silver Stripe



Available print



P153 Silver Stripe

Jade COATED PRINTS L32

Article Number: SS251.125070
Composition: 71% CO, 26% PES, 3% EA



Available print



P180 Metallic Snake

Jade elastic PUNTO L32

Article Number: SS251.124190
Composition: 65% CV, 30% PA, 5% EA



Available color



108 Light Grey

Jade pocket MORELLA L32

Article Number: SS251.223321
Composition: 64% CO, 33% CV, 3% EA



Flare fit

SS251.223321 - 417 Mellow Rose



Available color



417 Mellow Rose

Jade elastic SPRING KNITS L32

Article Number: SS251.251190
Composition: 65% PES, 30% CO, 5% EA

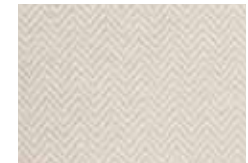


Flare fit

SS251.251190 - P79 Herringbone Beige



Available color



P79 Herringbone Beige

Eve DAILY DENIMS L32

Article Number: NOS.212136
Composition: 82% CO, 16% PES, 2% EA



Wide leg fit

NOS.212136 - D01 Old Blue



Available washing



D01 Old Blue

Eve DAILY DENIMS L32

Article Number: SS251.212136
Composition: See sales app for composition and price of each washing!



Wide leg fit

SS251.212136 - D122 Aged Indigo



Available washings



D16 Used Light Blue



D122 Aged Indigo

Eve button DAILY DENIMS L32

Article Number: SS251.212324
Composition: 97% CO, 3% EA



Wide leg fit

SS251.212324 - D94 Summer Blue



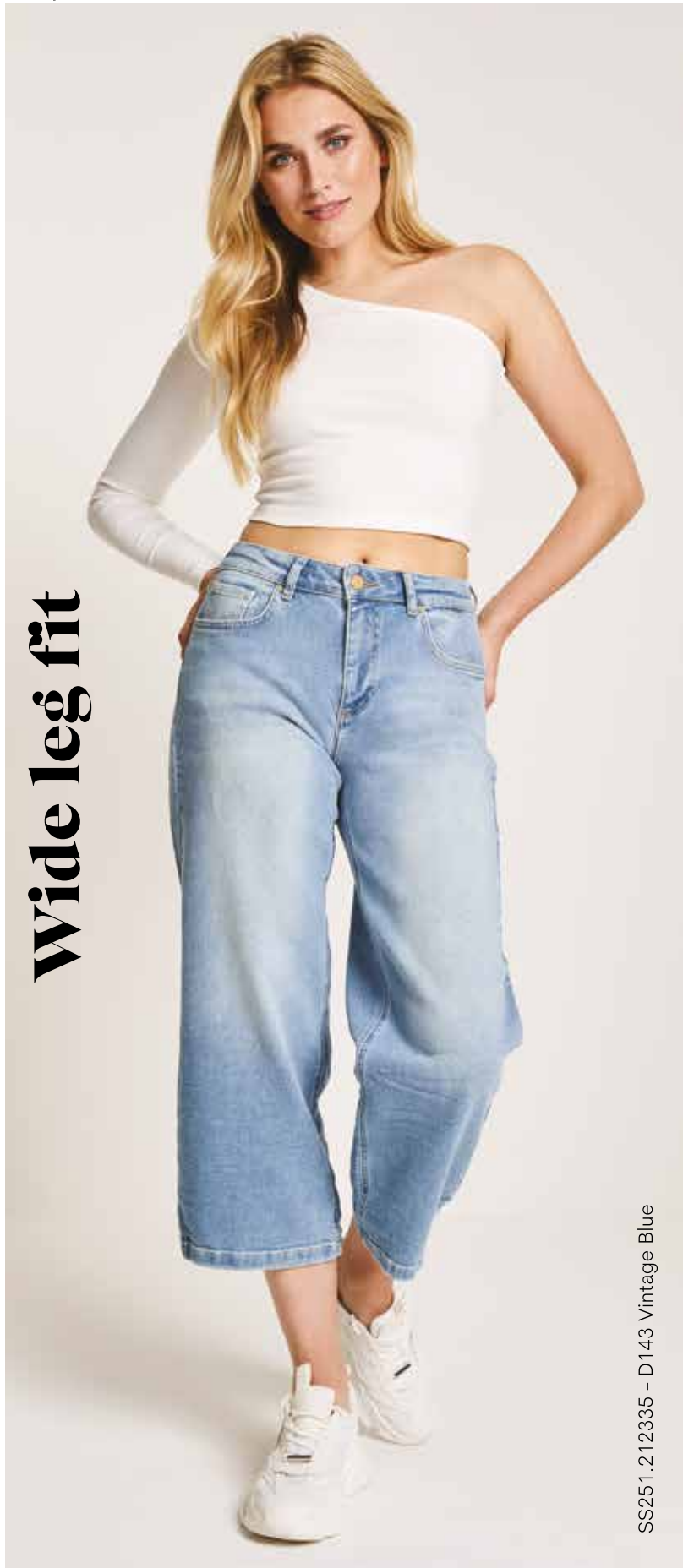
Available washing



D94 Summer Blue

Eve Cropped DAILY DENIMS L26

Article Number: SS251.212335
Composition: 98% CO, 2% EA



Wide leg fit

SS251.212335 - D143 Vintage Blue



Available washing



D143 Vintage Blue

Eve pocket COLOR DENIM L32

Article Number: SS251.005281
Composition: 91% CO, 6% PES, 3% EA

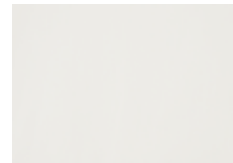


Wide leg fit

SS251.005281 - 002 White



Available colors



002 White



227 Beige

Eve cropped COLOR DENIM L26

Article Number: SS251.005335
Composition: 91% CO, 6% PES, 3% EA



Wide leg fit

SS251.005335 - 014 Cream



Available color



014 Cream

Eve button CITY TECH L32

Article Number: SS251.252324
Composition: 87% PES, 13% EA



Wide leg fit

SS251.252324 - 436 Orchid



Available colors



215 Light Taupe



314 Royal Blue



436 Orchid

Eve button SPRING BOUCLÉ L32

Article Number: SS251.250324
Composition: 50% CO, 30% PES, 10% CV, 10% LRX



Wide leg fit

SS251.250324 - 227 Beige



Available color



227 Beige

Mira pocket DAILY DENIMS L32/L34

Article Number: SS251.212290

Composition: See the sales app to find which colors and washings are available in more inseams.



Wide leg fit

SS251.212290 - D175 Light Grey Denim



Available washings



D122 Aged Indigo



D175 Light Grey Denim



D179 Cosmic Blue

Mira stud DAILY DENIMS L32/L34

Article Number: SS251.212310

Composition: 50% CO, 10% REG CO, 39% CLY, 1% EA



Wide leg fit

SS251.212310 - D179 Cosmic Blue



Available washing



D179 Cosmic Blue

Mira ajour COLOR DENIM L30

Article Number: SS251.005340
Composition: 91% CO, 6% PES, 3% EA

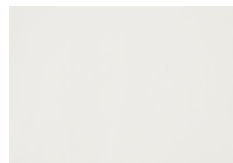


Wide leg fit

SS251.005340 - 002 White



Available color



002 White

Mira button MORELLA L32

Article Number: SS251.223344
Composition: 64% CO, 33% CV, 3% EA



Wide leg fit

SS251.223344 - 230 Sand



Available color



230 Sand

Mira elastic PUNTO L32

Article Number: SS251.124206
Composition: 65% CV, 30% PA, 5% EA

Wide leg fit



SS251.124206 - 230 Sand



Available color

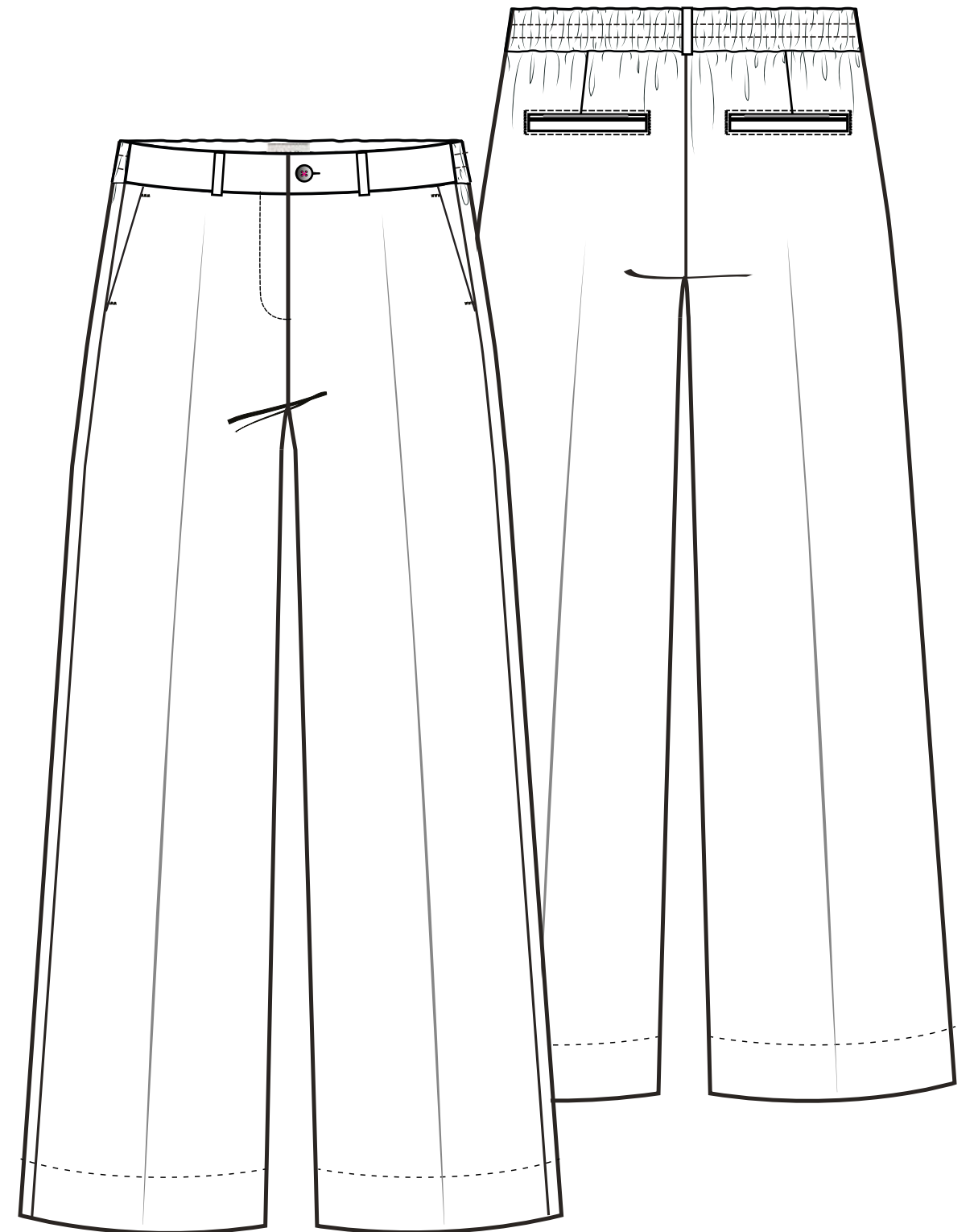


230 Sand

Mira elastic CITY FLUID L32

Article Number: SS251.253206
Composition: 89% PES, 11% EA

Wide leg fit



Available colors



210 Taupe



435 Magenta



313 Light Blue

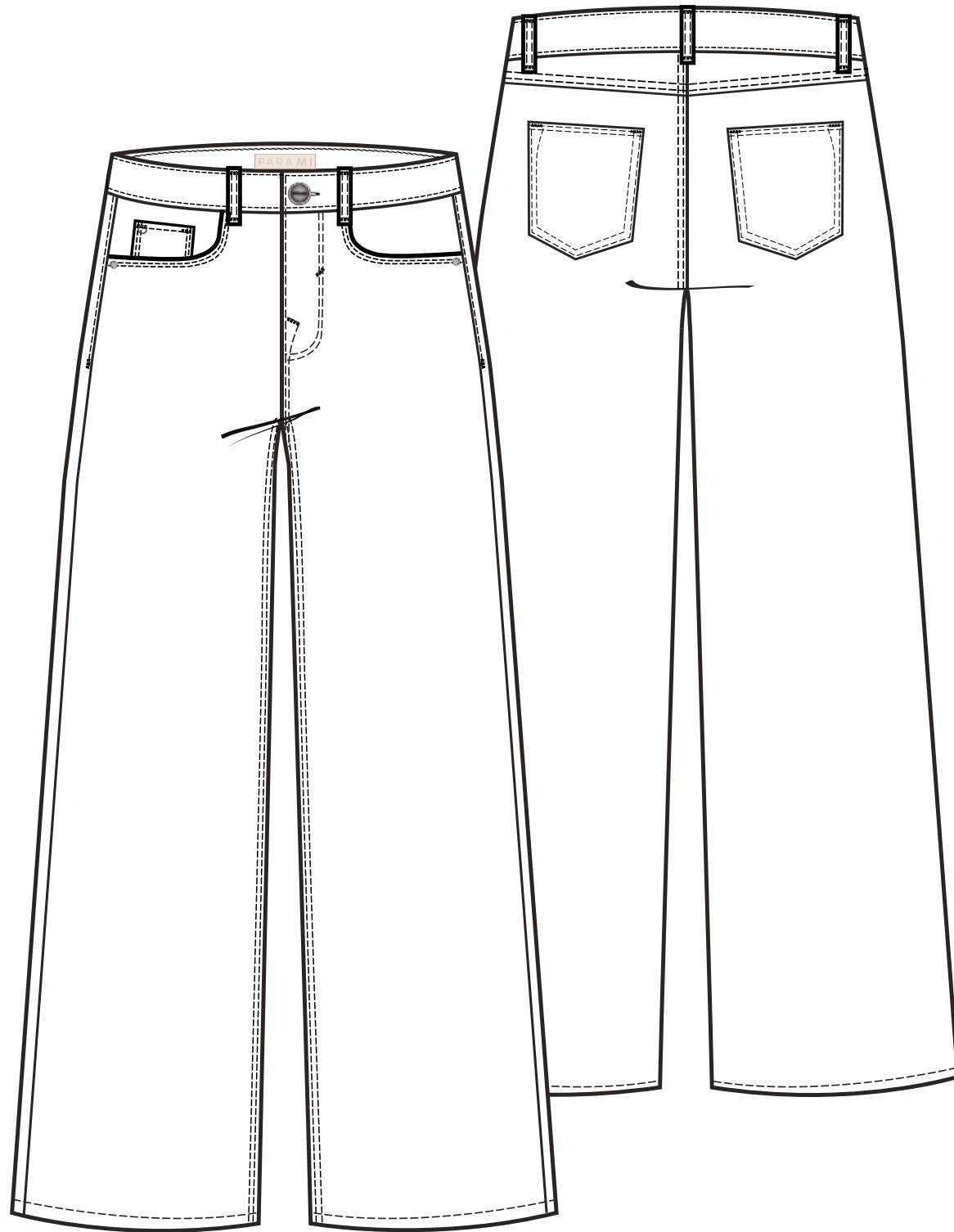


227 Beige

Mira COLOR DENIM L32

Article Number: SS251.005207
Composition: 91% CO, 6% PES, 3% EA

Wide leg fit



Available colors



014 Cream

215 Light Taupe

402 Misty Rose

Mira elastic CREPE L32

Article Number: SS251.199206
Composition: 97% PES, 3% EA

Wide leg fit



SS251.199206 - 402 Misty Rose



Available colors



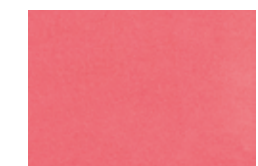
314 Royal Blue



320 Dusty Blue



402 Misty Rose



443 Coral

Mira elastic CITY PROGRAM L32

Article Number: SS251.232206
Composition: 50% CV, 47% PES, 3% EA



Wide leg fit

SS251.232206 - 108 Light Grey



Available color



108 Light Grey

Mira city CITY PROGRAM L32

Article Number: SS251.232225
Composition: 75% PES, 19% CV, 6% EA

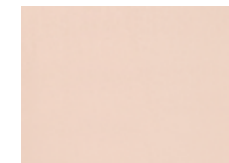


Wide leg fit

SS251.232225 - P175 Melange Beige



Available colors



448 Nude



P175 Melange Beige

Mira cargo CITY PROGRAM L32

Article Number: SS251.232304
Composition: 100% CV



Wide leg fit

SS251.232304 - 215 Light Taupe



Available color



215 Light Taupe

Mira city SPRING BOUCLÉ L32

Article Number: SS251.250225
Composition: 61% PES, 37% CV, 2% EA



Wide leg fit

Available colors



230 Sand



323 Blue Ice

Hannah CITY PROGRAM L32

Article Number: SS251.232018
Composition: 64% PES, 33% CV, 3% EA



Wide leg fit

SS251.232018 - P176 Herringbone Sand



Available color



P176 Herringbone Sand

Hannah elastic LUXURY PINSTRIPES L32

Article Number: SS251.248122
Composition: 63% PES, 33% CV, 3% EA, 1% LRX



Wide leg fit

SS251.248122 - S12 Beige Silver



Available stripes



108 Light Grey



230 Sand



S12 Beige Silver

Hannah SPRING KNITS L32

Article Number: SS251.251018
Composition: 95% PES, 5% EA



Available color



P178 Zigzag Light Taupe

Cloë DAILY DENIMS L32/L34

Article Number: SS251.212334
Composition: 50% CO, 10% REG CO, 39% CLY, 1% EA



Available washing



D179 Cosmic Blue

Cloë MORELLA L32/L34

Article Number: SS251.223334
Composition: 64% CO, 33% CV, 3% EA



Available colors



230 Sand



417 Mellow Rose

SS251.223334 - 230 Sand

Wide leg fit

Cloë city CITY TECH L32

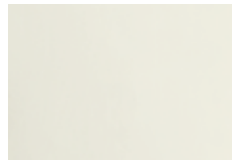
Article Number: SS251.252343
Composition: 87% PES, 13% EA



Available colors



014 Cream



636 Pistachio Green

SS251.252343 - 636 Pistachio Green

Wide leg fit

Cloë pleat CITY PROGRAM L32

Article Number: SS251.232345
Composition: 98% PES, 2% EA



SS251.232345 - 215 Light Taupe



Available color



215 Light Taupe

Wide leg fit

July skirt DAILY DENIMS

Article Number: SS251.212162
Composition: See sales app for composition and price of each washing!



SS251.212162 - D179 Cosmic Blue

Specials



Available washings



D122 Aged Indigo



D179 Cosmic Blue

July skirt COLOR DENIM

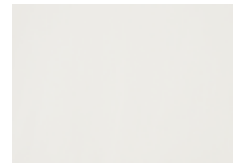
Article Number: SS251.005162
Composition: 91% CO, 6% PES, 3% EA



SS251.005162 - 002 White



Available color



002 White

Specials

Lisa gilet DAILY DENIMS

Article Number: SS251.212336
Composition: See sales app for composition and price of each washing!



SS251.212336 - D143 Vintage Blue



Available washings



D143 Vintage Blue



D179 Cosmic Blue

Specials



A conscious choice

Sustainable business is more than just a trend. Doing business in a socially responsible way, is an important part of the Para Mi business operation. Sustainable business, or corporate social responsibility, can be done in many different ways. Good for the environment, society, people and animals; we cannot ignore it. We find it important and see it as part of our business.

For Para Mi sustainable business means that we choose a combination of four important pillars: we want to 'do good' for people, the environment, society and animals.



Think about tomorrow

All production partners, with whom we work, have the same aspiration as we do to minimize energy and water consumption. We are constantly looking for and applying energysaving developments.

The laundries where our jeans are washed re-use 75% of the water used in the production process. That's a pretty high percentage. In addition, they make very conscious use of certain chemicals and only use them when necessary. Our fabric suppliers have various ecological and sustainability labels.





PARA-MI.COM

SALES@PARA-MI.COM | INFO@PARA-MI.COM | 0031 (0)20 811 0334

