

SPRING SUMMER 25.2




PARAMI
it's the fit



SKINNY	
CAPRI	5
GRACE	7
AMBER	8
SLIM	
LANA	10
LYNDSEY	11
KIM	13
SLIM CHINO	
CINDY	14
ZOË	15
CARROT	
CARICE	16
TAPERED	
BOWIE	19
JILL	23
LOOSE	
BOBBY	24
KICK FLARE	
MILA	29
FLARE	
JADE	32
NOOR	34
WIDE LEG	
EVE	35
MIRA	39
CLOË	44
HANNAH	51
FELINE	52
SPECIALS	
ELLA	53
JULY	54
JAYDA	56
EVI	57
DANI	58
MAUVE	60
MILOU	61

It's the fit

At Para Mi we have a timeless basic collection of standard fits in different fabrics, colours and washings. Every season this basic collection is supplemented with new custom fits, new fabrics and surprising designs, always in excellent stretch quality and with a number of striking eye-catchers. All our designs are based on fit, style, quality and comfort.



Because of our exclusive focus on ladies trousers, we know what you expect from a pair of trousers. Therefore every pair of Para Mi trousers has a high waist and a comfortable fit, without losing it's fashionable look.



INCH-SIZE X INSEAM CM		
L8	- 20,0 CM	
L10	- 25,5 CM	
L12	- 30,0 CM	
L20	- 50,0 CM	
L24	- 60,0 CM	
L25	- 63,0 CM	
L26	- 66,0 CM	
L28	- 71,0 CM	
L30	- 76,0 CM	
L32	- 83,5 CM	
L34	- 86,5 CM	

COMPOSITIONS LIST

CO	COTTON	RCY	RECYCLED POLYESTER
PES	POLYESTER	RUC	RE-USED COTTON
PA	POLYAMIDE	REG	REGENERATED COTTON
EA	ELASTAN	PU	POLYURETHANE
CV	VISCOSE	CLY	LYOCELL
RCP	RECYCLED POLYESTER	LI	LINEN
		LRX	METALLIC YARNS

Capri DAILY DENIMS L26

Article Number: SS252.212008

Composition: Please check sales app for composition of each washing!

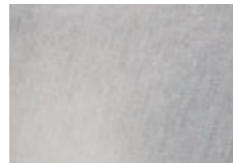
Skinny fit



SS252.212008 - D182 River Blue



Available washings



D175 Light Grey Denim



D182 River Blue

Capri COLOR DENIM L26

Article Number: SS252.005008

Composition: 91% CO, 6% PES, 3% EA

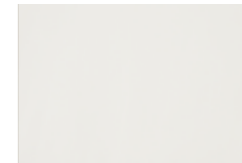
Skinny fit



SS252.005008 - 636 Pistachio Green



Available colors



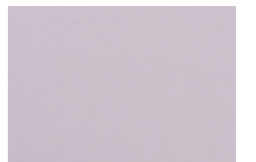
002 White



636 Pistachio Green



403 Blush



700 Soft Lilac



515 Soft Yellow

Grace pocket COLOR DENIM L20

Article Number: SS252.005352
Composition: 91% CO, 6% PES, 3% EA

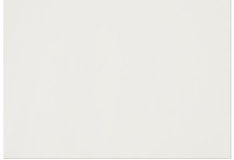


Skinny fit

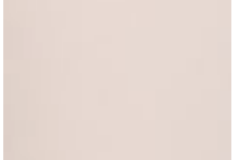
SS252.005352 - 002 White



Available colors



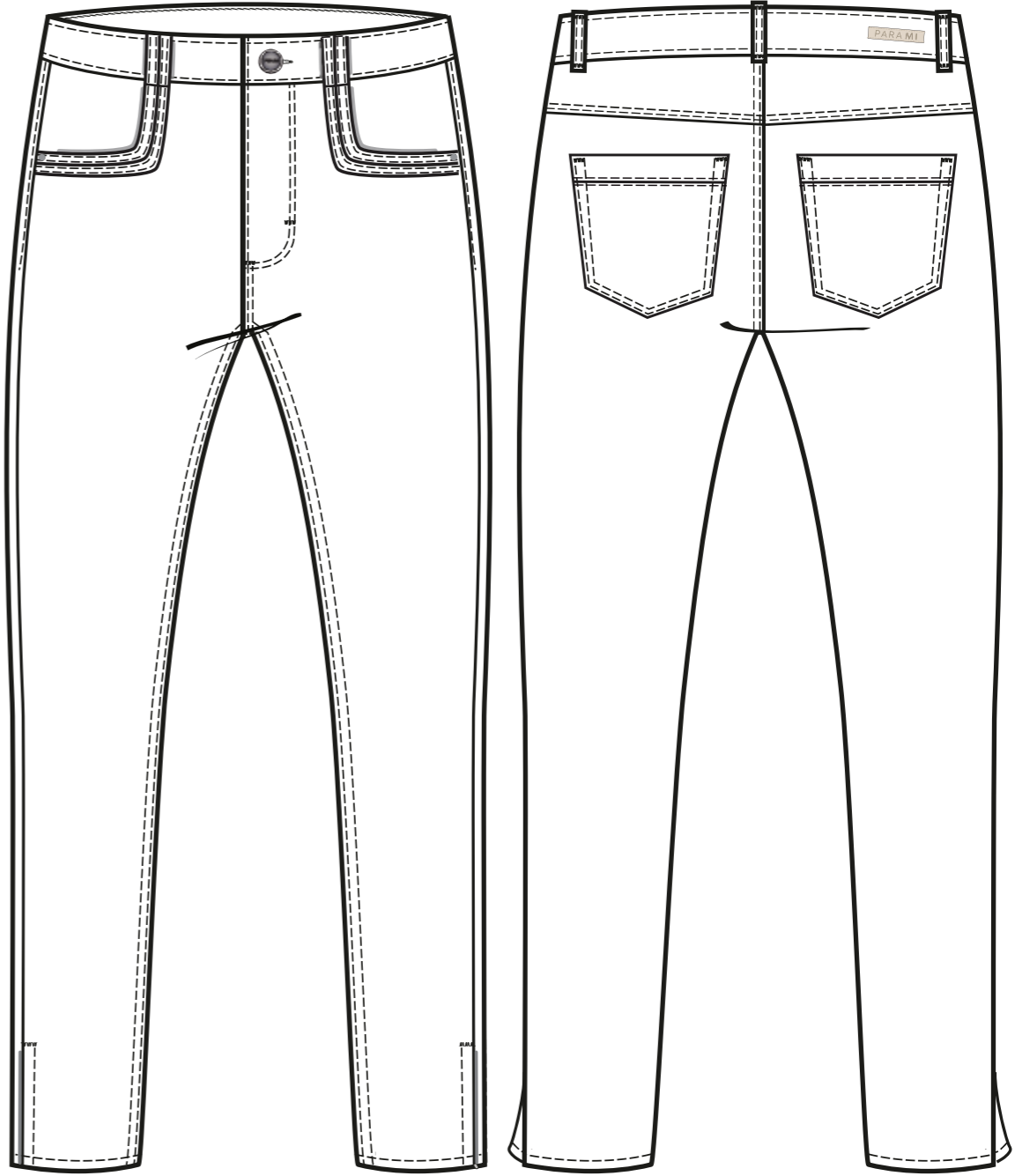
002 White



403 Blush

Amber split TINTED DENIM L28

Article Number: SS252.226216
Composition: 89% CO, 8% PES, 3% EA



Skinny fit

Available color



230 Sand

Amber split HEAVEN UNI L28

Article Number: SS252.001216
Composition: 89% CO, 8% PES, 3% EA

Skinny fit

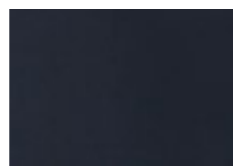


No sample available. Please use sample from SS24 or see picture in colorbook/sales app.

SS252.001216



Available color



301 Navy

Lana short PUNTO L8

Article Number: SS252.124357
Composition: 65% CV, 30% PA, 5% EA

Slim fit



SS252.124357 - 227 Beige



Available colors



001 Black



227 Beige

Lyndsey DAILY DENIMS L12

Article Number: SS252.212028

Composition: Please check sales app for composition of each washing!



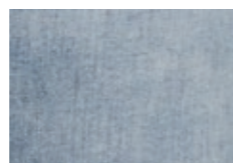
SS252.212028 - D182 River Blue



Available washings



D108 Stone Blue



D182 River Blue

Lyndsey COLOR DENIM L12

Article Number: SS252.005028

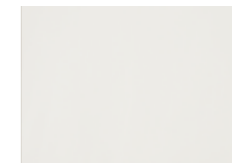
Composition: 91% CO, 6% PES, 3% EA



SS252.005028 - 014 Cream



Available colors



002 White



014 Cream



215 Light Taupe

Kim ajour COLOR DENIM L28

Article Number: SS252.005250
Composition: 91% CO, 6% PES, 3% EA

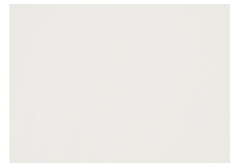


Slim fit

SS252.005250 - 002 White



Available colors



002 White



515 Soft Yellow

Cindy SUPERSTRETCH COTTON L28

Article Number: SS252.256342
Composition: 55% CO, 42% CV, 3% EA



(Slim) chino fit

SS252.256342 - 403 Blush



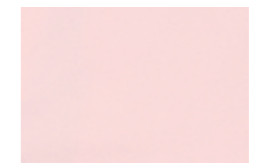
Available colors



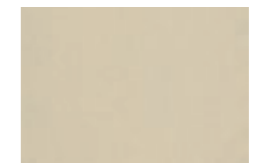
014 Cream



230 Sand



403 Blush



637 Light Olive

Zoë DAILY DENIMS L8

Article Number: SS252.212175
Composition: 50% CO, 40% CLY, 10% MOD



(Slim) chino fit

SS252.212175 - D132 Fluid Denim



Available washing



D132 Fluid Denim

Carice destroy DAILY DENIMS L29

Article Number: SS252.212346
Composition: 50% CO, 10% REG CO, 39% CLY, 1% EA



Carrot fit



SS252.212346 - D153 Washed Vintage



Available washing



D153 Washed Vintage

Carice paperbag

DAILY DENIMS L29

Article Number: SS252.212347
Composition: 93% CO, 5% RCY, 2% EA



Carrot fit



SS252.212347 - D142 Used Vintage



Available washing



D142 Used Vintage

Carice paperbag

SUMMER MODAL L25

Article Number: SS252.255347
Composition: 89% CMD, 11% RCP

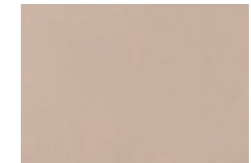
Carrot fit



SS252.255347 - 210 Taupe



Available color



210 Taupe

Bowie DAILY DENIMS L30

Article Number: SS252.212244

Composition: Please check sales app for composition of each washing!

Tapered fit



Sample is in wrong colorway, please use only for style reference.



Available washings



D175 Light Grey Denim



D182 River Blue

Bowie TINTED DENIM L30

Article Number: SS252.226244

Composition: 89% CO, 8% PES, 3% EA

Tapered fit



Sample is in wrong colorway, please use only for style reference.



Available colors



230 Sand



417 Mellow Rose



636 Pistachio Green

Bowie COATINGS L30

Article Number: SS252.233244
Composition: 71% LI, 25% PES, 4% EA

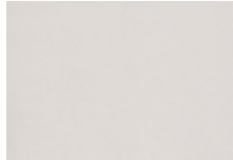


Tapered fit

SS252.233244 - 900 Metallic Silver



Available color



900 Metallic Silver

Bowie SAFARI PRINT L30

Article Number: SS252.133244
Composition: 67% CO, 30% PES, 3% EA



Tapered fit

SS252.133244 - 230 Sand



Available color



230 Sand

Jill SUPERSTRETCH COTTON L26

Article Number: SS252.256179
Composition: 55% CO, 42% CV, 3% EA



Tapered fit

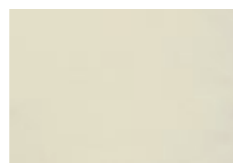
SS252.256179 - 700 Soft Lilac



Available colors



230 Sand



636 Pistachio Green



700 Soft Lilac

Bobby DAILY DENIMS L30

Article Number: SS252.212091
Composition: Please check sales app for composition of each washing!



Loose fit

SS252.212091 - D182 River Blue



Available washings



D175 Light Grey Denim



D182 River Blue

Bobby short DAILY DENIMS L8

Article Number: SS252.212218

Composition: Please check sales app for composition of each washing!



Loose fit

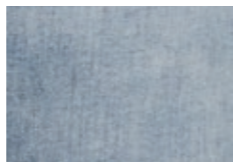
SS252.212218 - D108 Stone Blue



Available washings



D108 Stone Blue



D182 River Blue

Bobby COLOR DENIM L30

Article Number: SS252.005091

Composition: 91% CO, 6% PES, 3% EA

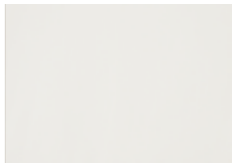


Loose fit

SS252.005091 - 700 Soft Lilac



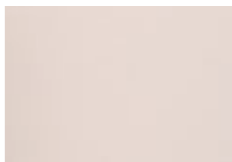
Available colors



002 White



636 Pistachio Green



403 Blush



700 Soft Lilac



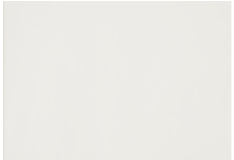
515 Soft Yellow

Bobby short COLOR DENIM L8

Article Number: SS252.005218
Composition: 91% CO, 6% PES, 3% EA



Available colors



002 White



014 Cream



215 Light Taupe



700 Soft Lilac

SS252.005218 - 700 Light Taupe

Loose fit

Bobby CASUAL COTTON L30

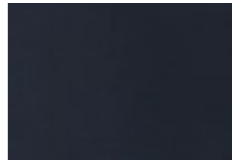
Article Number: SS252.207091
Composition: 74% CO, 23% PES, 3% EA



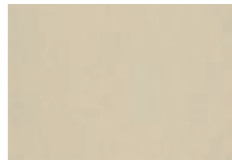
Available colors



230 Sand



301 Navy



637 Light Olive

SS252.207091 - 230 Sand

Loose fit

Mila mini flare DAILY DENIMS L26

Article Number: SS252.212337
Composition: 94% CO, 4% PES, 2% EA



SS252.212337 - D108 Stone Blue



Available washing



D108 Stone Blue

Kick flare fit

Mila mini flare TINTED DENIM L26

Article Number: SS252.226337
Composition: 89% CO, 8% PES, 3% EA



SS252.226337 - 417 Mellow Rose



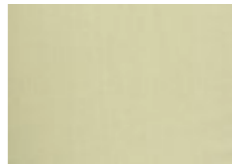
Available colors



230 Sand



417 Mellow Rose



636 Pistachio Green

Kick flare fit

Mila mini flare LEOPARD PRINT L26

Article Number: SS252.147337
Composition: 80% CO, 18% PES, 2% EA

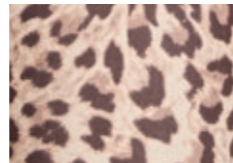
Kick flare fit



SS252.147337 - P11 Leopard



Available print



P11 Leopard

Jade braid DAILY DENIMS L32

Article Number: SS252.212308
Composition: 93% CO, 5% RCY, 2% EA

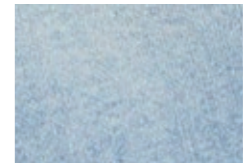
Flare fit



SS252.212308 - D142 Used Vintage



Available washing



D142 Used Vintage

Jade TINTED DENIM L32

Article Number: SS252.226070
Composition: 89% CO, 8% PES, 3% EA



Flare fit

SS252.226070 - 636 Pistachio Green



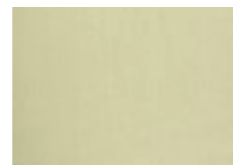
Available colors



230 Sand



417 Mellow Rose



636 Pistachio Green

Noor city PUNTO L32

Article Number: SS252.124332
Composition: Please check sales app for composition of each washing!



Flare fit

SS252.124332 - 402 Misty Rose



Available colors



001 Black



227 Beige



402 Misty Rose

Eve stud DAILY DENIMS L32

Article Number: SS252.212348
Composition: 97% CO, 3% EA



Wide leg fit

SS252.212348 - D94 Summer Blue



Available washing



D94 Summer Blue

Eve pocket DAILY DENIMS L26

Article Number: SS252.212281
Composition: 93% CO, 5% RCY, 2% EA

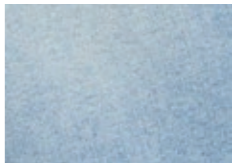


Wide leg fit

SS252.212281 - D142 Used Vintage



Available washing



D142 Used Vintage

Eve stud COLOR DENIM L32

Article Number: SS252.005348
Composition: 91% CO, 6% PES, 3% EA



Wide leg fit

SS252.005348 - 014 Cream



Available color



014 Cream

Eve city CITY PROGRAM L25

Article Number: SS252.232276
Composition: 58% PES, 22% CV, 22% CLY

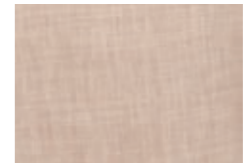


Wide leg fit

SS252.232276 - 210 Taupe



Available color



210 Taupe

Mira ajour DAILY DENIMS L28

Article Number: SS252.212340
Composition: 97% CO, 3% EA

Wide leg fit



SS252.212340 - D94 Summer Blue



Available washing



D94 Summer Blue

Mira scarf DAILY DENIMS L32

Article Number: SS252.212351
Composition: 50% CO, 40% CLY, 10% MOD

Wide leg fit



SS252.212351 - D132 Fluid Denim



Available washing



D132 Fluid Denim

Mira unfolded seam

COLOR DENIM L30

Article Number: SS252.005338
Composition: 91% CO, 6% PES, 3% EA

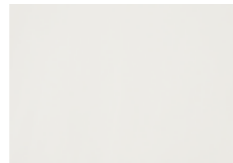
Wide leg fit



SS252.005338 - 002 White



Available color



002 White

Mira stud

TINTED DENIM L32

Article Number: SS252.226310
Composition: 89% CO, 8% PES, 3% EA

Wide leg fit



SS252.226310 - 230 Sand



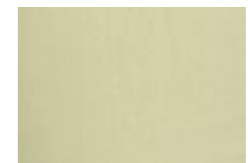
Available colors



230 Sand



417 Mellow Rose



636 Pistachio Green

Mira elastic FLUID DENIM L32

Article Number: SS252.259206
Composition: 100% CLY

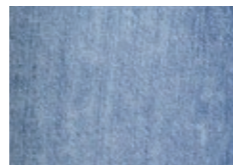
Wide leg fit



SS252.259206 - D132 Fluid Denim



Available washing



D132 Fluid Denim

Cloë DAILY DENIMS L32

Article Number: SS252.212334
Composition: Please check sales app for composition of each washing!

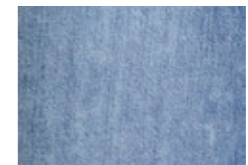
Wide leg fit



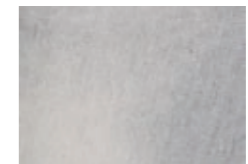
SS252.212334 - D175 Light Grey Denim



Available washings



D132 Fluid Denim



D175 Light Grey Denim

Cloë COLOR DENIM L34

Article Number: SS252.005334
Composition: 91% CO, 6% PES, 3% EA

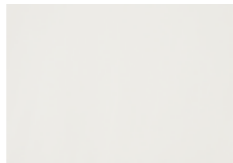


Wide leg fit

SS252.005334 - 002 White



Available color



002 White

Cloë pleat FLOWY CITY L32

Article Number: SS252.258345
Composition: 90% CV, 10% PES



Wide leg fit

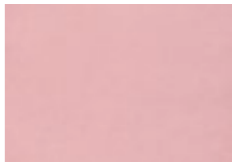
SS252.258345 - 417 Mellow Rose



Available colors



014 Cream



417 Mellow Rose

Cloë paperbag FLOWY CITY L26

Article Number: SS252.258355
Composition: 90% CV, 10% PES

Wide leg fit



SS252.258355 - 215 Light Taupe



Available colors



001 Black



215 Light Taupe

Cloë city FLOWY LINEN L32

Article Number: SS252.088343
Composition: 51% LI, 38% PES, 9% VI, 2% EA

Wide leg fit



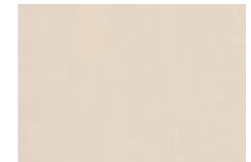
SS252.088343 - 229 Almond



Available colors



001 Black



230 Sand



229 Almond

Cloë city CITY PROGRAM L32

Article Number: SS252.232343
Composition: 53% PES, 45% CV, 2% EA



Wide leg fit

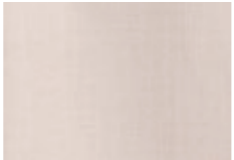
SS252.232343 - 402 Misty Rose



Available colors



227 Beige



402 Misty Rose

Cloë city FLUID SAFARI L32

Article Number: SS252.254343
Composition: 61% CV, 39% PES

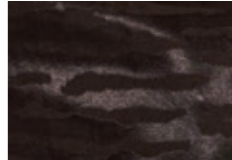


Wide leg fit

SS252.254343 - 230 Sand



Available color



001 Black



230 Sand

Hannah FLOWY LINEN L32

Article Number: SS252.088018
Composition: 51% LI, 38% PES, 9% VI, 2% EA

Wide leg fit



SS252.088018 - 230 Sand



Available colors



001 Black



230 Sand



229 Almond

Feline short FANCY SHORTS L10

Article Number: SS252.257354
Composition: 70% PES, 28% CO, 2% LUREX

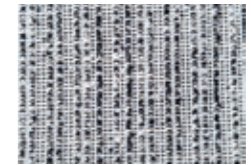
Wide leg fit



SS252.257354 - Off White



Available colors



001 Black



003 Off White



P183 Bouclé Cream Black

Ella skirt DAILY DENIMS L8

Article Number: SS252.212295
Composition: 97% CO, 3% EA



SS252.212295 - D94 Summer Blue



Available washing



D94 Summer Blue

Specials

July skirt DAILY DENIMS

Article Number: SS252.212162
Composition: Please check sales app for composition of each washing!



SS252.212162 - D175 Light Grey Denim



Available washings



D142 Used Vintage



D175 Light Grey Denim

Specials

July skirt LEOPARD PRINT

Article Number: SS252.147162
Composition: 80% CO, 18% PES, 2% EA

Specials



SS252.147162 - P11 Leopard



Available print



P11 Leopard

Jayda skirt DAILY DENIMS

Article Number: SS252.212349
Composition: 97% CO, 3% EA

Specials



SS252.212349 - D94 Summer Blue



Available washing



D94 Summer Blue

Evi blouse DAILY DENIMS

Article Number: SS252.212358
Composition: 100% CO



SS252.212358 - D03 Mid Sky Blue



Available washing



D03 Mid Sky Blue

Specials

Dani dress DAILY DENIMS

Article Number:
Composition: 100% CO



SS252.212356 - D03 Mid Sky Blue



Available washings



D03 Mid Sky Blue



D142 Used Vintage



Specials

Dani dress FLOWY CITY

Article Number: SS252.258356
Composition: 90% CV, 10% PES



SS252.258356 - 215 Light Taupe



Available colors



001 Black



215 Light Taupe

Specials

Mauve jacket DAILY DENIMS

Article Number: SS252.212359
Composition: 98% CO, 2% EA



SS252.212359 - D03 Mid Sky Blue



Available washing



D03 Mid Sky Blue

Specials

Milou jumpsuit DAILY DENIMS L32

Article Number: SS252.212360
Composition: 100% CO



Available washing



D75 Clean Indigo

SS252.212360 - D75 Clean Indigo

Specials

A conscious choice

Sustainable business is more than just a trend. Doing business in a socially responsible way, is an important part of the Para Mi business operation. Sustainable business, or corporate social responsibility, can be done in many different ways. Good for the environment, society, people and animals; we cannot ignore it. We find it important and see it as part of our business.

For Para Mi sustainable business means that we choose a combination of four important pillars: we want to 'do good' for people, the environment, society and animals.



Think about tomorrow

All production partners, with whom we work, have the same aspiration as we do to minimize energy and water consumption. We are constantly looking for and applying energysaving developments.

The laundries where our jeans are washed re-use 75% of the water used in the production process. That's a pretty high percentage. In addition, they make very conscious use of certain chemicals and only use them when necessary. Our fabric suppliers have various ecological and sustainability labels.





PARA-MI.COM

SALES@PARA-MI.COM | INFO@PARA-MI.COM | 0031 (0)20 811 0334