



PARAMI

it's the fit



FALL WINTER 24.2



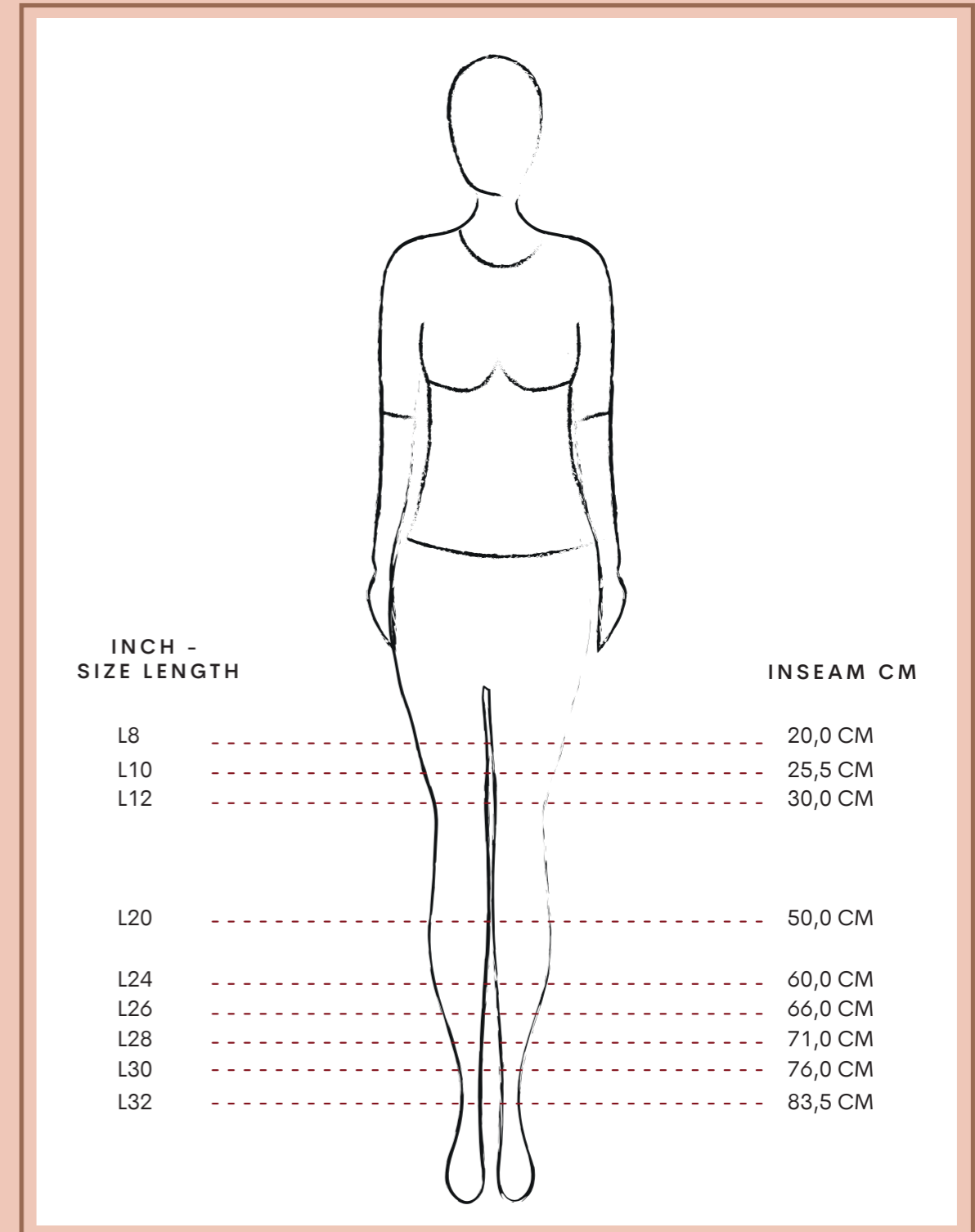
SKINNY	
CELINE	5
LIVIA	8
AMBER	9
SLIM	
ANGIE	10
KIM	11
SLIM CHINO FIT	
NOVA	13
CATE	14
TAPERED	
BOWIE	15
STRAIGHT	
VAYEN	16
LOOSE	
BOBBY	19
BOOTCUT	
VERA	23
FLARE	
JADE	25
NOOR	31
WIDE LEG	
EVE	32
MIRA	34
HANNAH	44
SPECIALS	
JOAN	46
JULIA	47
ROMEE	48
JESS	49

It's the fit

At Para Mi we have a timeless basic collection of standard fits in different fabrics, colours and washings. Every season this basic collection is supplemented with new custom fits, new fabrics and surprising designs, always in excellent stretch quality and with a number of striking eye-catchers. All our designs are based on fit, style, quality and comfort.



Because of our exclusive focus on ladies trousers, we know what you expect from a pair of trousers. Therefore every pair of Para Mi trousers has a high waist and a comfortable fit, without losing it's fashionable look.



COMPOSITIONS LIST

CO	COTTON	RCY	RECYCLED POLYESTER
PES	POLYESTER	RUC	RE-USED COTTON
PA	POLYAMIDE	PU	POLYURETHANE
EA	ELASTAN	CLY	LYOCELL
CV	VISCOSE	LI	LINEN
RCP	RECYCLED POLYESTER		

Celine zipper DAILY DENIMS L32

Article Number: FW242.212313
Composition: 82% CO, 16% PES, 2% EA

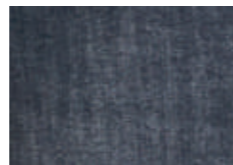
Skinny fit



FW242.212313 - D169 Blue Grey Denim



Available washing



D169 Blue Grey Denim

Celine zipper WINTER SPECIALS L32

Article Number: FW242.245313
Composition: 71% CO, 26% PES, 3% EA

Skinny fit



FW242.245313 - P38 Snake Print



Available special



P38 Snake Print

Celine ASKY L30 / L32

Article Number: NOS.006001
Composition: 88% PA, 12% EA



Available colors



001 Black



301 Navy

NOS.006001 - 301 Navy

Skinny fit

Liva ASKY L30

Article Number: FW242.006286
Composition: 88% PA, 12% EA



Available colors



001 Black



301 Navy

FW242.006286 - 301 Navy

Skinny

Amber ASKY L28

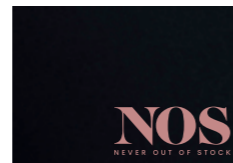
Article Number: NOS.006003
Composition: 88% PA, 12% EA



NOS.006003 - 001 Black



Available color



001 Black

Angie ASKY L32

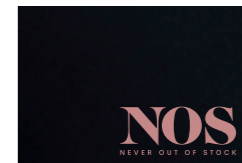
Article Number: NOS.006006
Composition: 88% PA, 12% EA



NOS.006006 - 001 Black



Available color



001 Black

Kim DAILY DENIMS L30

Article Number: FW242.212272
Composition: 93% CO, 5% PES, 2% EA



Available washing



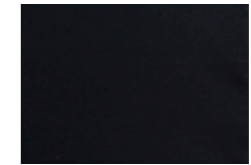
D123 Pure Indigo

Kim elastic PUNTO L30

Article Number: FW242.124228
Composition: 65% CV, 30% PA, 5% EA



Available color



001 Black

Nova ASKY L30

Article Number: NOS.006195
Composition: 88% PA, 12% EA

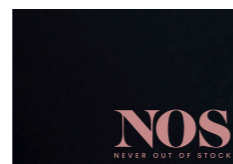


Slim chino fit

NOS.006195 - 001 Black



Available color



001 Black

Cate DAILY DENIMS L30

Article Number: FW242.212274
Composition: 82% CO, 16% PES, 2% EA

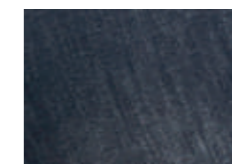


Slim chino fit

FW242.212274 - D169 Blue Grey Denim



Available washing



D169 Blue Grey Denim

Bowie cargo FLOWY SATIN L30

Article Number: FW242.230303

Composition: 60% RCP, 38% PES, 2% EA



Tapered fit



FW242.230303 - 611 Dark Forest



Available color



611 Dark Forest

Vayen sparkle DAILY DENIMS L32

Article Number: FW242.212323

Composition: See sales app for composition of each washing!

Straight fit



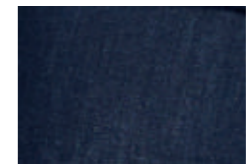
FW242.212323 - D123 Pure Indigo



Available washings



D68 Grey Used



D123 Pure Indigo

Vayen pocket DENIM PRINTS L32

Article Number: FW242.213325
Composition: 89% CO, 6% PES, 3% EA

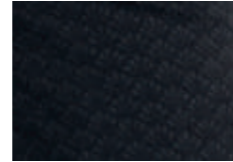


Straight fit

FW242.213325 - P168 - Baroque Denim



Available print



P168 Baroque Denim

Vayen city ASKY L32

Article Number: FW242.006268
Composition: 88% PA, 12% EA

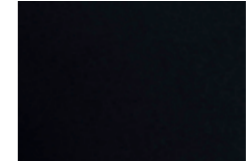


Straight fit

FW242.006268 - 001 Black



Available color



001 Black

Bobby DAILY DENIMS L30

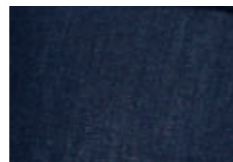
Article Number: FW242.212091
Composition: 93% CO, 5% PES, 2% EA



Available washings



D68 Grey Used



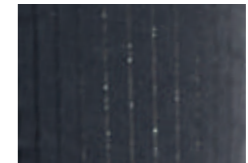
D123 Pure Indigo

Bobby WINTER SPECIALS L30

Article Number: FW242.245091
Composition: See sales app for composition of each design!



Available specials



S09 Stripe Sparkle



903 Metallic Khaki

Bobby VINTAGE CORDUROY L30

Article Number: FW242.104091
Composition: 98% CO, 2% EA



Loose fit

FW242.104091 - 233 Brown



Available colors



001 Black



233 Brown



633 Khaki Green

Bobby chino PUNTO L30

Article Number: FW242.124315
Composition: 65% CV, 30% PA, 5% EA

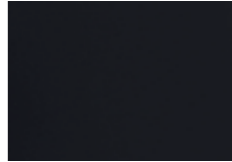


Loose fit

FW242.124315 - 114 Anthracite



Available color



114 Anthracite

Vera DAILY DENIMS L32

Article Number: FW242.212285
Composition: 93% CO, 5% PES, 2% EA

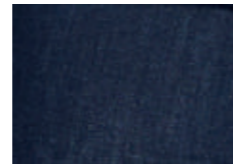


Bootcut

FW242.212285 - D123 Pure Indigo



Available washing



D123 Pure Indigo

Vera HEAVEN UNI L32

Article Number: FW242.001285
Composition: 67% CO, 29% PES, 4% EA



Bootcut

FW242.001285 - 001 Black



Available color



001 Black

Jade DAILY DENIMS L32

Article Number: FW242.212070
Composition: 88% CO, 10% PES, 2% EA



Available washing



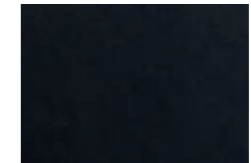
D68 Grey Used

Jade pocket DAILY DENIMS L32

Article Number: FW242.212321
Composition: 94% CO, 4% PES, 2% EA



Available washing



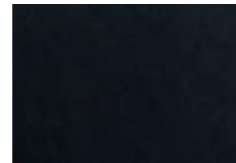
D168 Black Used

Jade seam DAILY DENIMS L32

Article Number: FW242.212322
Composition: 94% CO, 4% PES, 2% EA



Available washing



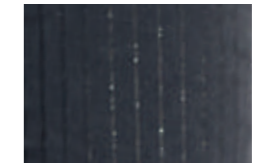
D168 Black Used

Jade WINTER SPECIALS L32

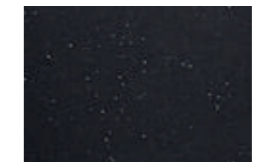
Article Number: FW242.245070
Composition: See sales app for composition of each design!



Available specials



S09 Stripe Sparkle



904 Sparkle Black

Jade ASKY L32

Article Number: NOS.006070
Composition: 88% PA, 12% EA



Flare fit

NOS.006070 - 001 Black



Available color



001 Black

Jade elastic SPARKLE JACQUARDS L32

Article Number: FW242.246190
Composition: 70% PES, 20% CV, 8% LRX, 2% EA



Flare fit

FW242.246190 - P172 Baroque Lurex



Available jacquard



P172 Baroque Lurex

Noor city PUNTO L32

Article Number: FW242.124332
Composition: 65% CV, 30% PA, 5% EA



Flare fit

FW242.124332 - 001 Black



Available color



001 Black



008 Winter White

Eve button DAILY DENIMS L32

Article Number: FW242.212324
Composition: 94% CO, 4% PES, 2% EA

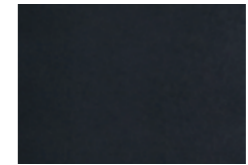


Wide leg fit

FW242.212324 - D168 Black Used



Available washing



D168 Black Used

Eve button TWILL JERSEY L32

Article Number: FW242.220324
Composition: 95% PES, 5% EA



Wide leg fit

FW242.220324 - 001 Black



Available colors



001 Black



623 Winter Olive

Mira city DAILY DENIMS L32

Article Number: FW242.212225
Composition: 93% CO, 5% PES, 2% EA



Wide leg fit

FW242.212225 - D123 Pure Indigo



Available washing



D123 Pure Indigo

Mira pocket DAILY DENIMS L32

Article Number: FW242.212290
Composition: 88% CO, 10% PES, 2% EA



Available washing



D68 Grey Used

Mira elastic FLOWY RIBCORD L32

Article Number: FW242.235206
Composition: 90% PES, 10% EA



Available colors



001 Black



114 Anthracite



008 Winter White

Mira elastic PUNTO L32

Article Number: FW242.124206
Composition: 65% CV, 30% PA, 5% EA



Wide leg fit

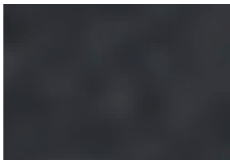
FW242.124206 - 008 Winter White



Available colors



008 Winter White



114 Anthracite



630 Green Smoke

Mira seam TWILL JERSEY L32

Article Number: FW242.220326
Composition: 95% PES, 5% EA

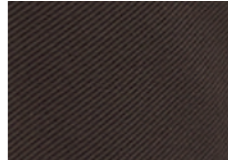


Wide leg fit

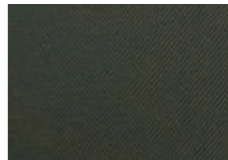
FW242.220326 - 233 Brown



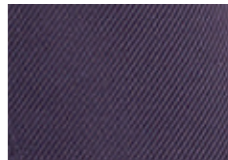
Available colors



233 Brown



623 Winter Olive



712 Winter Purple

Mira seam CREPE L32

Article Number: FW242.199326
Composition: 97% PES, 3% EA

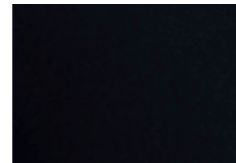
Wide leg fit



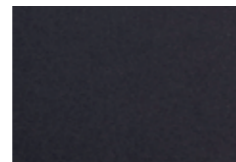
FW242.199326 - 229 Almond



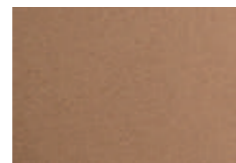
Available colors



001 Black



114 Anthracite



229 Almond

Mira elastic CREPE L32

Article Number: FW242.199206
Composition: 97% PES, 3% EA

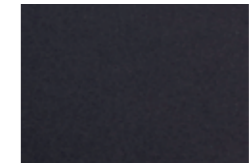
Wide leg fit



FW242.199206 - 711 Plum



Available colors



114 Anthracite



233 Brown



711 Plum

Mira elastic FLOWY SATIN L32

Article Number: FW242.230206
Composition: 60% RCP, 38% PES, 2% EA

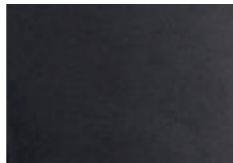


Wide leg fit

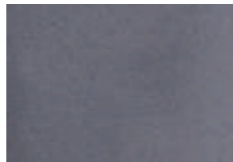
FW242.230206 - 115 Silver Antra



Available colors



001 Black



115 Silver Antra

Mira elastic SPARKLE JACQUARDS L32

Article Number: FW242.246206
Composition: See sales app for composition of each design!



Wide leg fit

FW242.246206 - P171 Paisley Lurex



Available jacquards



P169 Herringbone Lurex



P171 Paisley Lurex

Mira pocket BOUCLÉ L32

Article Number: FW242.247290

Composition: 60% PES, 18% CO, 18% CV, 2% LRX, 2% EA

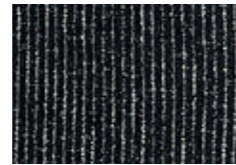


Wide leg fit

FW242.247290 - 001 Black



Available jacquard



001 Black

Hannah KNITTED JACQUARDS L32

Article Number: FW242.189018

Composition: See sales app for composition of each design!



Wide leg fit

FW242.189018 - P53 Twill Beige



Available jacquards



P53 Twill Beige



P173 Structure Beige

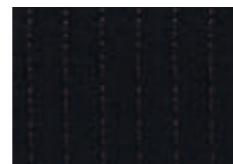
Hannah LUXURY PINSTRIPES L32

Article Number: FW242.248018

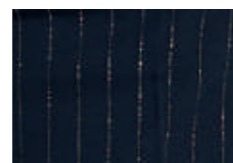
Composition: See sales app for composition of each design!



Available stripes



S10 Antra Copper



S11 Navy Gold

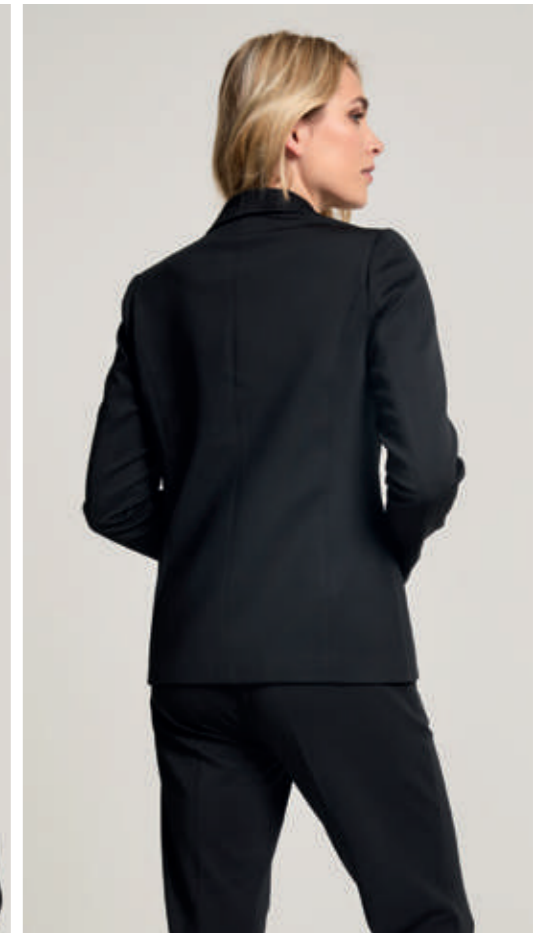


S12 Beige Silver

Joan Blazer TWILL JERSEY

Article Number: FW242.220203

Composition: 95% PES, 5% EA



Available color



001 Black

Julia jacket BOUCLÉ

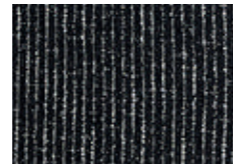
Article Number: FW242.247330
Composition: 60% PES, 18% CO, 18% CV, 2% LRX, 2% EA



FW242.247330 - 001 Black



Available jacquard



001 Black

Romee midi skirt BOUCLÉ

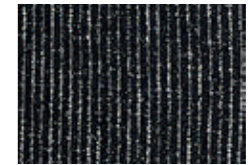
Article Number: FW242.247329
Composition: 60% PES, 18% CO, 18% CV, 2% LRX, 2% EA



FW242.247329 - 001 Black



Available jacquard



001 Black

Jess skirt TWILL JERSEY

Article Number: FW242.220328
Composition: 95% PES, 5% EA



Available color



001 Black

FW242.220328 - 001 Black

Specials

A conscious choice

Sustainable business is more than just a trend. Doing business in a socially responsible way, is an important part of the Para Mi business operation. Sustainable business, or corporate social responsibility, can be done in many different ways. Good for the environment, society, people and animals; we cannot ignore it. We find it important and see it as part of our business.

For Para Mi sustainable business means that we choose a combination of four important pillars: we want to 'do good' for people, the environment, society and animals.



Think about tomorrow

All production partners, with whom we work, have the same aspiration as we do to minimize energy and water consumption. We are constantly looking for and applying energysaving developments.

The laundries where our jeans are washed re-use 75% of the water used in the production process. That's a pretty high percentage. In addition, they make very conscious use of certain chemicals and only use them when necessary. Our fabric suppliers have various ecological and sustainability labels.





PARA-MI.COM

SALES@PARA-MI.COM | INFO@PARA-MI.COM | 0031 (0)20 811 0334