



FALL /
WINTER

COLLECTION
2025



Wega Green Goose
Fall / Winter 2025
Collection

Die Welt ist im Wandel.
Es ist Zeit für
neue Gefühle.
Es ist Zeit für eine
neue Outdoor.
Es ist Zeit für
WEGA GREEN GOOSE.

TITEL

MADRIGAL⁵⁸, REVERSIBLE PUFFER, 25.717.905,
SIZE 34 - 48, COL. 202 CAMEL/SCHOKO



SERENOVA⁵⁸,
FAKE-WOOL-JACKE,
25.767.917,
SIZE 34 - 48,
COL. 270 COFFEE

LINKE SEITE
MELEONA⁶⁴,
FAKE-WOOL HEMD,
25.761.918,
SIZE 34 - 52,
COL. 130 CREME

MELINDORA⁶⁰,
FAKE-WOOL-JACKE,
25.762.917,
SIZE 34 - 52,
COL. 130 CREME

RECHTE SEITE
SERENITA⁵⁶,
FAKE-WOOL BOMBER,
25.768.917,
SIZE 34 - 48,
COL. 130 CREME





SORELLE⁶⁸,
 MEMORY-HEMDJACKE,
 25.744.831,
 SIZE 34 - 48,
 COL. 494 WILD BERRY

LINKE SEITE
 CELESTAYA⁸⁶,
 LONG-HEMDJACKE,
 25.714.831,
 SIZE 34 - 56,
 COL. 990 SCHWARZ



MARISOLYA⁶⁶,
KIMONO-JACKE,
25.729.846,
SIZE 34 - 48,
COL. 533 FORREST

RECHTE SEITE
SYMARA⁵⁸,
LÄNGSSTEPP JACKE,
25.764.830,
SIZE 34 - 48,
COL. 533 FORREST



MARISELLE⁶⁴,
WATTIERTE HEMDJACKE,
25.735.869,
SIZE 34 - 48,
COL. 628 DEEP BLUE



SILANDRA⁹⁶,
HYBRID-TRENCH,
25.765.830,
SIZE 34 - 52,
COL. 130 CREME





CASSANDRIA⁹⁵,
HYBRID MANTEL,
25.730.909,
SIZE 34 - 52,
COL. 270 COFFEE

LINKE SEITE
MAVENTA⁶²,
REVERSIBLE JACKE,
25.731.909,
SIZE 34 - 52,
COL. 130 CREME

MODANIQUE¹⁰⁵,
FAKE-FUR-MANTEL,
25.747.847,
SIZE 34 - 48,
COL. 264 NOUGAT/BEIGE

RECHTE SEITE
SERAFINA⁵⁶,
MINK-FUR-JÄCKCHEN,
25.750.848,
SIZE 34 - 48,
COL. 208 MACCHIATO





MAGANELLE⁹⁰,
BONDING-WESTE,
25.756.847,
SIZE 34 - 48,
COL. 208 MACCHIATO

LINKE SEITE
SAPHIRELLE⁶²,
WENDE-BLAZER,
25.755.847,
SIZE 34 - 48,
COL. 208 MACCHIATO



MELITHIA⁶⁶,
COTTON RIPS PARKA,
25.752.914,
SIZE 34 - 52,
COL. 625 TINTE

LINKE SEITE
MAGUNE⁶⁰,
HYBRID JACKE,
25.751.914,
SIZE 34 - 52,
COL. 208 MACCHIATO

MEWISIENNE⁹⁰,
LONG-WESTE,
25.760.908,
SIZE 34 - 52,
COL. 208 MACCHIATO

RECHTE SEITE
MIRAZYEL⁶²,
ZACKENSTEPP-JACKE,
25.745.908,
SIZE 34 - 52,
COL. 494 WILD BERRY



CALIRA⁹⁰,
ZACKENSTEPP-MANTEL,
25.746.908,
SIZE 34 - 52,
COL. 625 TINTE

RECHTE SEITE
CALYTHERA¹¹⁰,
PUFFERMANTEL,
25.720.908,
SIZE 34 - 52,
COL. 533 FOREST



MONTALIS⁷⁶,
HYBRID-PARKA,
25.740.827,
SIZE 34 - 56,
COL. 225 WHISKEY

RECHTE SEITE
MELANTHA⁶²,
WENDEJACKE,
25.741.827,
SIZE 34 - 48,
COL. 225 WHISKEY



MARAVELLE⁸⁰,
SATIN-LONGJACKE,
25.704.845,
SIZE 34 - 56,
COL. 208 MACCHIATO

RECHTE SEITE
MELENARA¹⁰⁵,
TAILLIERTER STEPPMANTEL,
25.739.845,
SIZE 34 - 52,
COL. 208 MACCHIATO





CAMILOUA⁸⁶,
LONGJACKE ZACKENSTEPP,
25.612.845,
SIZE 34 - 56,
COL. 625 TINTE

LINKE SEITE
MIRALUNE⁶⁴,
KRISTALL-STEPPJACKE,
25.703.845,
SIZE 34 - 48,
COL. 130 CREME

STEPHIRA⁴⁸,
STEPP-ROCK,
25.759.845,
SIZE 34 - 48,
COL. 208 CREME



MORVENNA⁶²,
 SATIN-BOMBERJACKE,
 25.708.845,
 SIZE 34 - 48,
 COL. 494 WILD BERRY

RECHTE SEITE
 CYBELLE⁹⁵,
 SATIN-ZACKENSTEPP-MANTEL,
 25.705.845,
 SIZE 34 - 56,
 COL. 208 MACCHIATO





SORINA⁶⁸,
 PADDED OVERSHIRT,
 25.719.887,
 SIZE 34 - 48,
 COL. 983 ONYX

LINKE SEITE
 CASTALUNA¹¹⁰,
 PUFFERMANTEL,
 25.721.887,
 SIZE 34 - 56,
 COL. 983 ONYX

**VERTRIEBSPARTNER
SALES TEAM**

BADEN-WÜRTTEMBERG

RÜB Modeagentur
HDK-3 / 6. OG
+49 7031 81 58 00
modeagentur.rueb@wega-green-goose.eu

BAYERN

Modeagentur Irlbacher GmbH
MTC Haus 3, EG/Raum 011
+49 089 359 80 90
modeagentur-irlbacher@wega-green-goose.eu

**BERLIN · BRANDENBURG ·
MECKLENBURG-VORPOMMERN**

Modeagentur Susanne Bilsing
House of Brands
+49 0170 418 60 39
modeagentur.bilsing@wega-green-goose.eu

**HESSEN · RHEINLAND-PFALZ ·
SAARLAND**

IVORY Modeagentur
HDM Turm/0933
+49 0151 5063 7441
ivory-rl@t-online.de

**NIEDERSACHSEN · HAMBURG ·
BREMEN · SCHLESWIG-HOLSTEIN**

Modeagentur Reinhilde Stauer
Haus A - Raum 420
+49 040 558 31 47
modeagentur.stauer@wega-green-goose.eu

NORDRHEIN-WESTFALEN

Modeagentur Joosten
Halle 29, 1. OG
+49.0211.43 98 99
modeagentur.joosten@wega-green-goose.eu

**SACHSEN · SACHSEN-ANHALT ·
THÜRINGEN**

Modeagentur Udo Schöbel
MMC Raum D/175
+49 0171 754 97 53
u.schoebel@wega-green-goose.eu

BELGIEN · LUXEMBURG

Schöningh Fashion nv
+32 2 2679131
jacqueline@schoningh.be

FRANKREICH

Diffumod Internationale S.á.r.l.
+33 03 870 47 84 6
diffumod@wega-green-goose.eu

IRLAND

Fashion Developments Ltd
Michael Byrne
Number 2 Fashion City
M50 Business Park
+353 1 429 51 00
fashiondevelopments@wega-green-goose.eu

ITALIEN

UE FASHION SRL
Via Due Giugno, 25
00019 Tivoli Terme (RM)
+39 327 21 98 553
info@uefashion.it

NIEDERLANDE

Schöningh Fashion BV
W.F.C. 1.10.08
+31 20 61 52 088
info@schoninghfashion.com

ÖSTERREICH

Fashion Agency JANCA
+43 0664 164 52 24
fashion.agency.janca@wega-green-goose.eu

POLEN

Tango Fashion
Zbigniew Stachowiak
Ul. Dabrowskiego 8/1
+48 602 78 13 56
tangofashion@wega-green-goose.eu

PORTUGAL

Paulo José Rocha da Mota
Rua do Campo Alegre, 490
+351 9 145 788 90
joao.crespo@wega-green-goose.eu

RUSSLAND · GUS-STAATEN

FD Fashion
+49 02064 606 624
fdfashion@wega-green-goose.eu

SCHWEIZ

Modeagentur Frani
TMC 104, Thurgauerstr. 117
+41 79 421 54 83
f.frani@modeagentur-frani.ch

SLOWENIEN

Rebellion d.o.o.
+386 041 705 637
borutb@wega-green-goose.eu

SPANIEN

Brandenmark S.L.
+34 60 79 35 453
brandenmark@wega-green-goose.eu

TSCHECHISCHE REPUBLIK

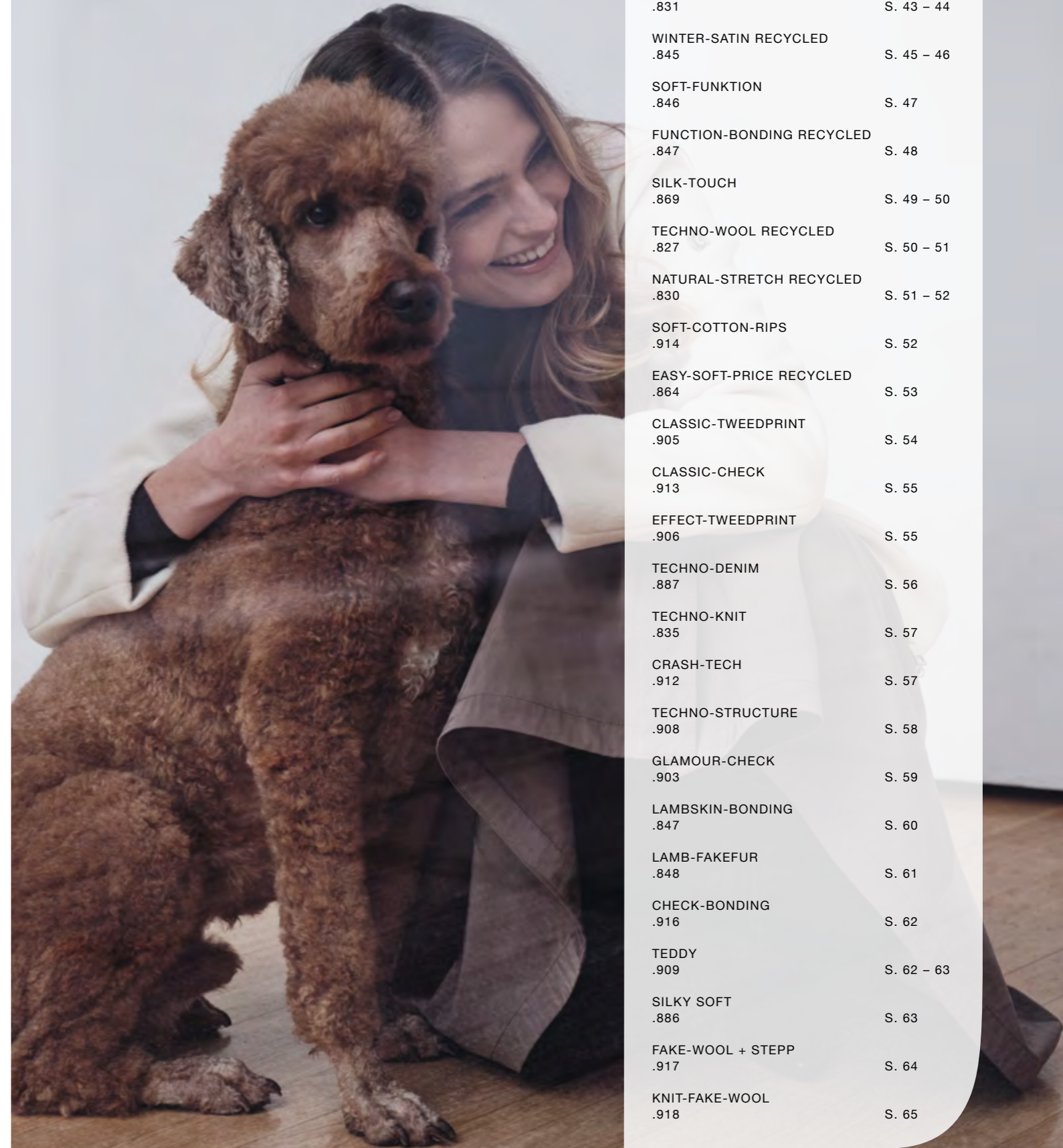
Kabrhel-Perab
+420 739 045 187
kabrhel-perab@wega-green-goose.eu

UNGARN

Import 2005 BT
Rózsa Záhorszky
+36 30 64 89 581
rozsa.zahorszky@wega-green-goose.eu

WORKBOOK

FALL/WINTER 2025



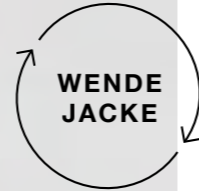
NOS SOFT-PEACH RECYCLED .734	S. 40 – 43
MEMORY .831	S. 43 – 44
WINTER-SATIN RECYCLED .845	S. 45 – 46
SOFT-FUNKTION .846	S. 47
FUNCTION-BONDING RECYCLED .847	S. 48
SILK-TOUCH .869	S. 49 – 50
TECHNO-WOOL RECYCLED .827	S. 50 – 51
NATURAL-STRETCH RECYCLED .830	S. 51 – 52
SOFT-COTTON-RIPS .914	S. 52
EASY-SOFT-PRICE RECYCLED .864	S. 53
CLASSIC-TWEEDPRINT .905	S. 54
CLASSIC-CHECK .913	S. 55
EFFECT-TWEEDPRINT .906	S. 55
TECHNO-DENIM .887	S. 56
TECHNO-KNIT .835	S. 57
CRASH-TECH .912	S. 57
TECHNO-STRUCTURE .908	S. 58
GLAMOUR-CHECK .903	S. 59
LAMBSKIN-BONDING .847	S. 60
LAMB-FAKEFUR .848	S. 61
CHECK-BONDING .916	S. 62
TEDDY .909	S. 62 – 63
SILKY SOFT .886	S. 63
FAKE-WOOL + STEPP .917	S. 64
KNIT-FAKE-WOOL .918	S. 65

NEW: NOS REVER SIBLE

.734













NOS REVERSIBLE



NOSMELIORA⁶⁰, WENDE-BOMBER, 15.235.734, SIZE 34 - 56, COL. 208, 494, 495, NOS510, NOS652, 990

SOFT-PEACH RECYCLED .734

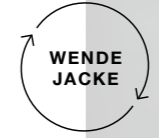
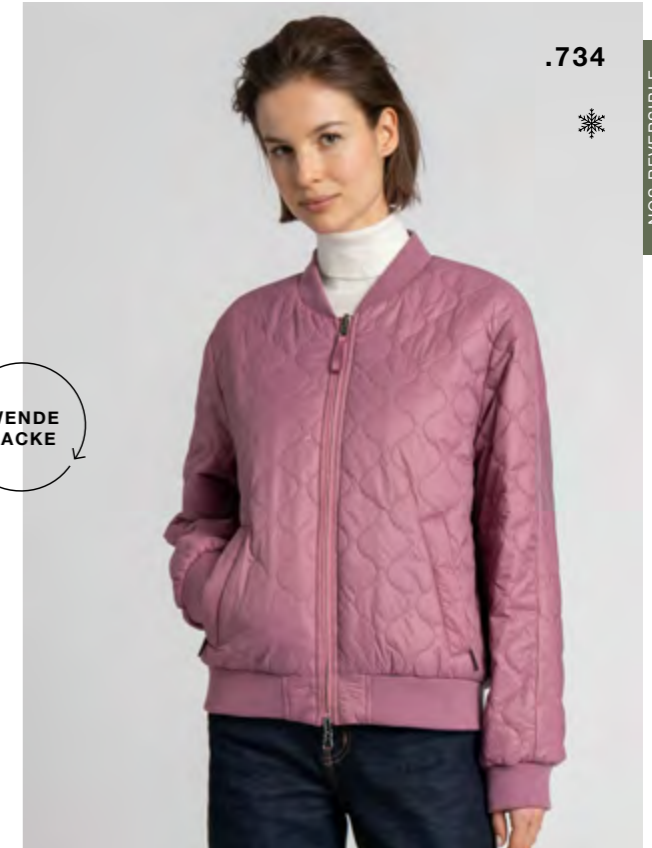
-  190 SAND
-  208 MACCHIATO
-  494 WILDBERRY
-  495 BURGUND
-  510 SCHILF
-  533 FOREST
-  555 MOOS
-  628 DEEP BLUE
-  652 NAVY
-  990 SCHWARZ



.734



NOS REVERSIBLE

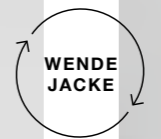


NOSMELIORA⁶⁰, WENDE-BOMBER, 15.235.734, SIZE 34 - 56, COL. 208, 494, 495, NOS510, NOS652, 990

.734



NOS REVERSIBLE

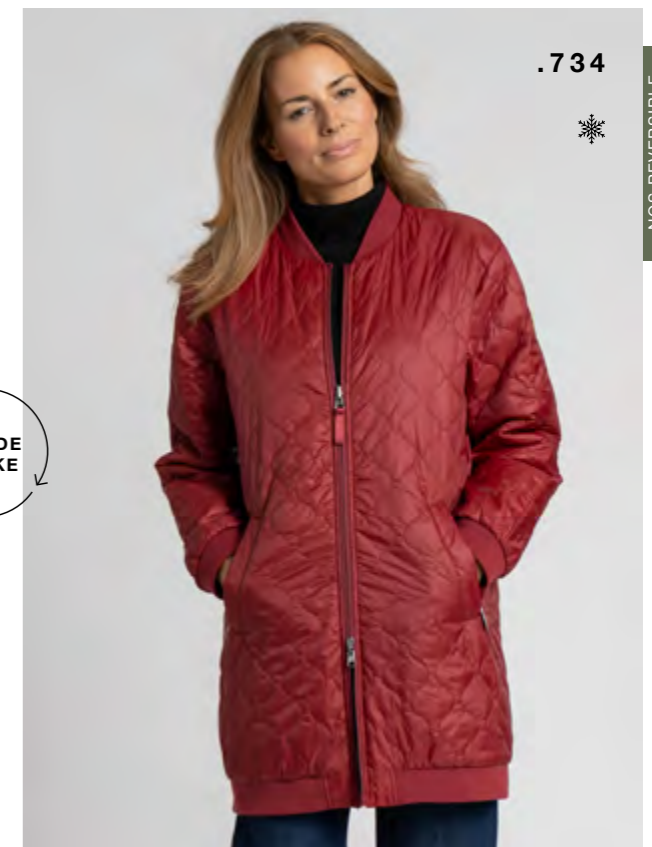


NOSCHALINA⁸⁴, WENDE-LONGBOMBER, 15.415.734, SIZE 34 - 56, COL. NOS190, 494, 495, 510, NOS652, 990

.734



NOS REVERSIBLE



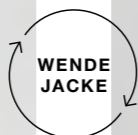
NOSCHALINA⁸⁴, WENDE-LONGBOMBER, 15.415.734, SIZE 34 - 56, COL. NOS190, 494, 495, 510, NOS652, 990



.734



NOS REVERSIBLE



NOS MENDALINA⁷⁰, WENDE-JACKE 25.426.734,
SIZE 34 - 56, COL. NOS 190, 208, 495, 510, 533, NOS 652



.734



NOS REVERSIBLE

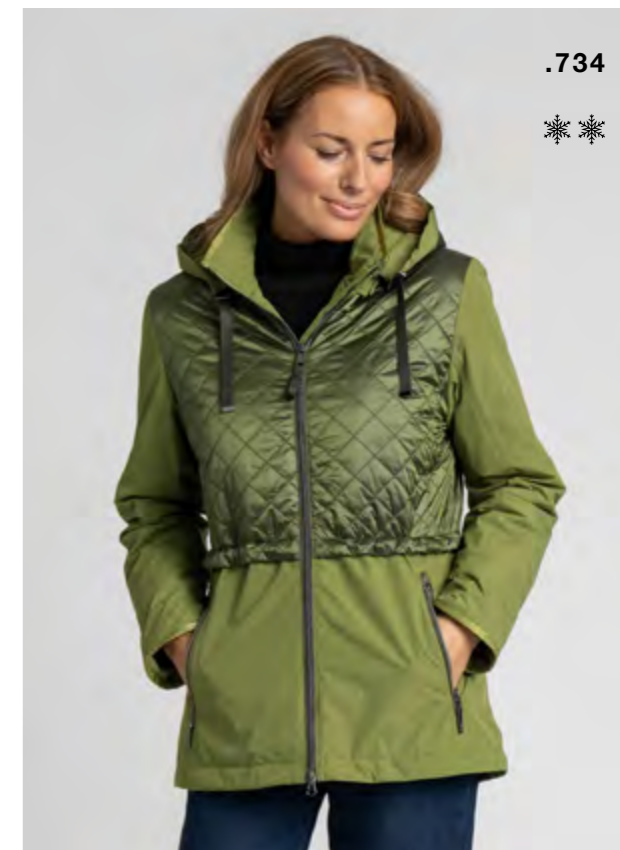
NOS MENDALINA⁷⁰, WENDE-JACKE 25.426.734,
SIZE 34 - 56, COL. NOS 190, 208, 495, 510, 533, NOS 652



.734



MANTEGLIA⁹⁰, HYBRIDMANTEL, 25.711.734,
SIZE 34 - 52, COL. 208, 494, 495, 555, 628



.734



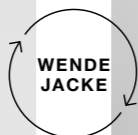
MIVARA⁷², HYBRIDJACKE, 25.732.734,
SIZE 34 - 52, COL. 208, 494, 495, 555, 628



.734



NEW NOS REVERSIBLE



NOS CORALINE⁹⁸, WENDE-PARKAMANTEL, 25.427.734,
SIZE 34 - 56, COL. NOS 190, 208, 495, NOS 510, 533, 652



.734



NEW NOS REVERSIBLE

NOS CORALINE⁹⁸, WENDE-PARKAMANTEL, 25.427.734,
SIZE 34 - 56, COL. NOS 190, 208, 495, NOS 510, 533, 652

MEMORY
.831

- 208 MACCHIATO
- 270 COFFEE
- 494 WILDBERRY
- 555 MOOS
- 628 DEEP BLUE
- 990 SCHWARZ



.831



MELISAT¹²⁰, TRENCHCOAT, 25.712.831,
SIZE 34 - 48, COL. 270, 990



.831



CELESTAYA⁸⁶, LONG-HEMDJACKE, 25.714.831,
SIZE 34 - 56, COL. 208, 270, 494, 555, 628, 990



.831



MISTRALYN⁸², MEMORY-BOMBER, 25.709.831,
SIZE 34 - 48, COL. 208, 270, 494, 555, 628, 990

WINTER-SATIN RECYCLED
.845

130 CREME



208 MACCHIATO



270 COFFEE



277 PLATIN



494 WILDBERRY



495 BURGUND



533 FOREST



555 MOOS



625 TINTE



.845



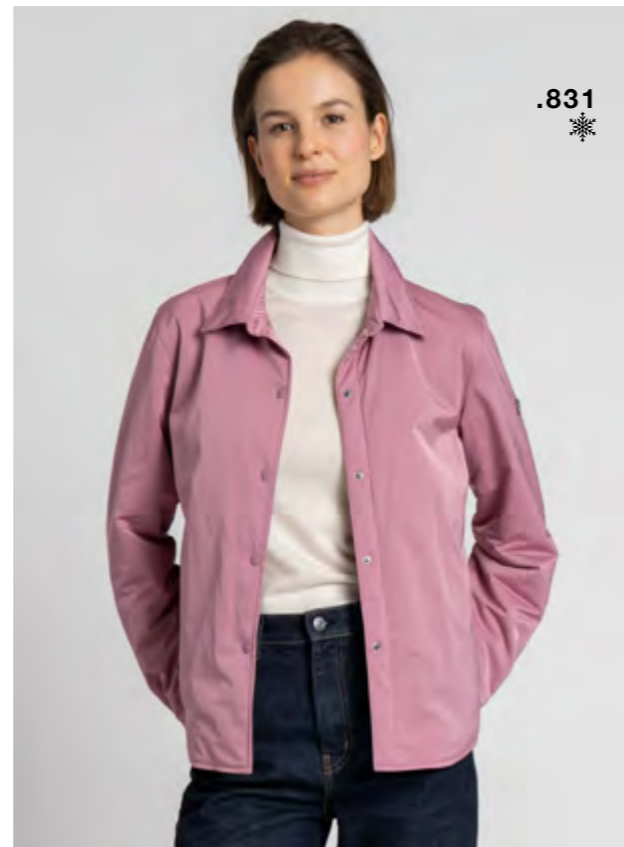
MIRALUNE⁶⁴, KRISTALL-STEPPJACKE, 25.703.845,
SIZE 34 - 48, COL. 130, 208, 270, 277, 494, 495, 555



.831



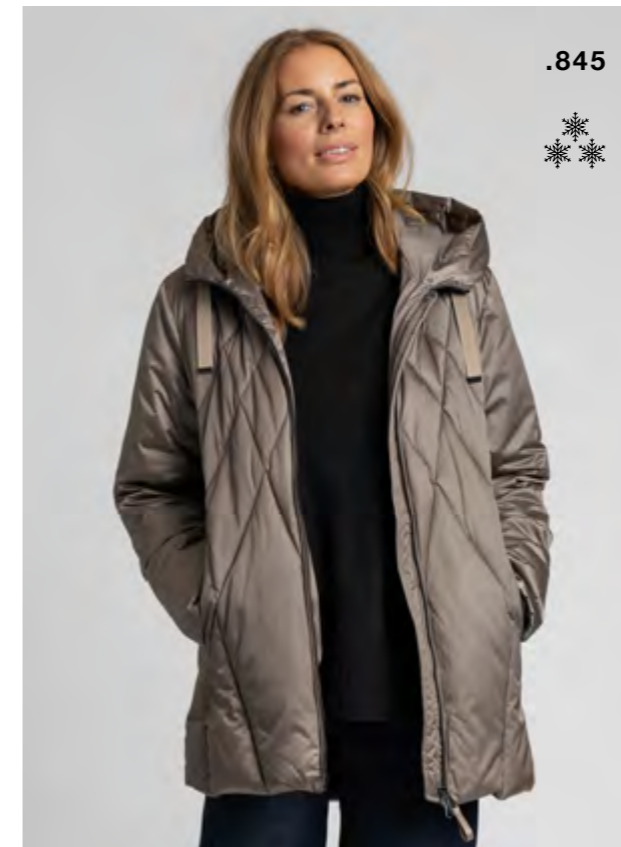
MISTRAYA⁸⁰, MEMORY-GLOCKENROCK, 25.743.831,
SIZE 34 - 48, COL. 208, 270, 494, 555, 628, 990



.831



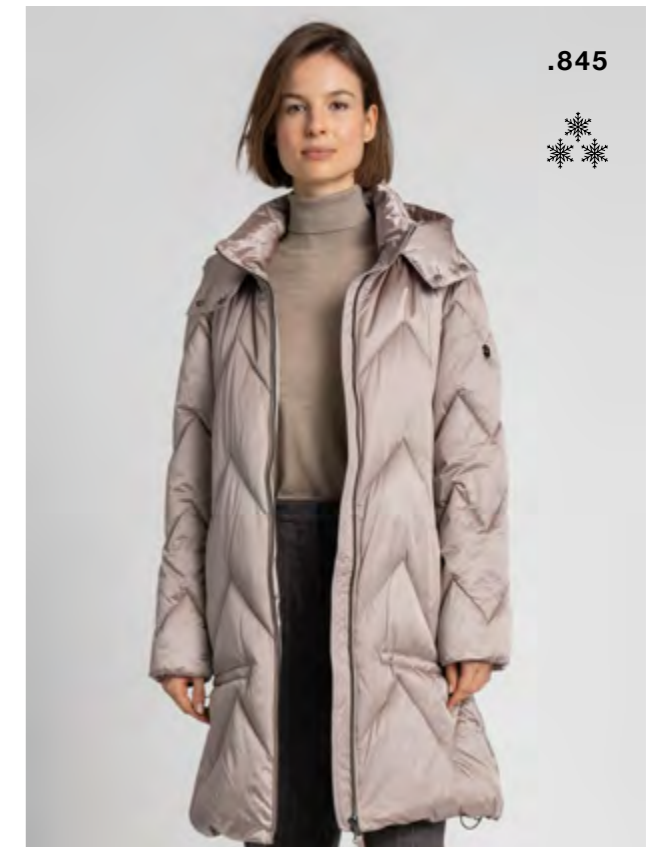
SORELLE⁶⁸, MEMORY-HEMDJACKE, 25.744.831,
SIZE 34 - 48, COL. 208, 270, 494, 555, 628, 990



.845



MARAVELLE⁸⁰, SATIN-LONGJACKE, 25.704.845,
SIZE 34 - 56, COL. 130, 208, 270, 277, 494, 495, 533, 555, 628



.845



CYBELLE⁹⁵, SATIN-ZACKENSTEPP-MANTEL, 25.705.845,
SIZE 34 - 56, COL. 130, 208, 270, 277, 494, 495, 533, 555, 628



.845



MORVENNA⁶², SATIN-BOMBERJACKE, 25.708.845,
SIZE 34 - 48, COL. 208, 270, 277, 494, 495, 555



.845



MELENARA¹⁰⁵, TAILLIERTER STEPPMANTEL, 25.739.845,
SIZE 34 - 52, COL. 208, 270, 277, 494, 495, 555

SOFT-FUNKTION
.846

114 ECRU

494 WILDBERRY

495 BURGUND

533 FOREST

555 MOOS

635 INDIGO



.846



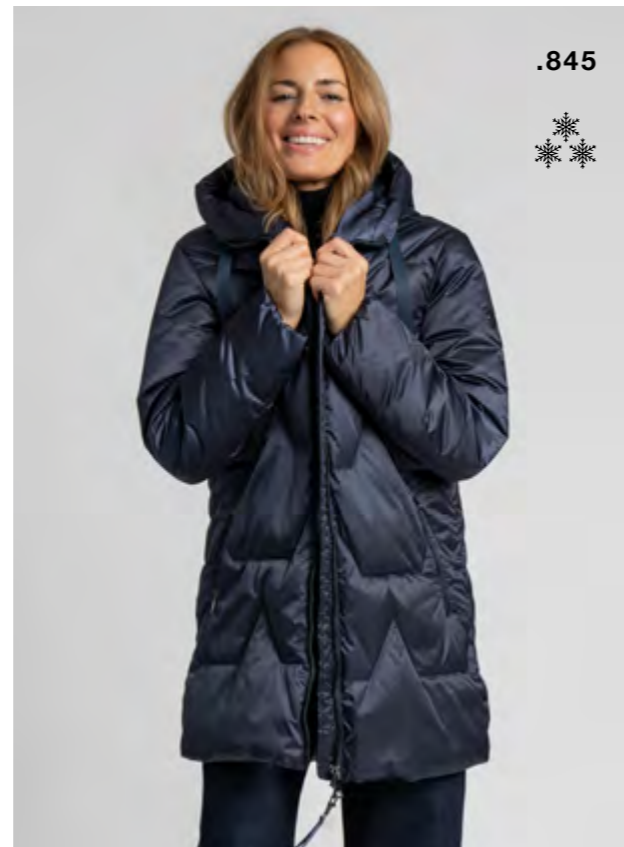
COURANELLA¹⁰⁵, HYBRID-MANTEL, 25.706.846,
SIZE 34 - 56, COL. 114, 494, 495, 533, 555, 635



.845



STEPHIRA⁴⁸, STEPP-ROCK, 25.759.845,
SIZE 34 - 48, COL. 208, 270, 277, 494, 495, 555



.845



CAMILOUA⁸⁶, LONGJACKE ZACKENSTEPP, 25.612.845,
SIZE 34 - 56, COL. 208, 270, 277, 494, 555, 625



.846



MOHERYNA⁸⁸, HYBRID-PARKA, 25.728.846,
SIZE 34 - 56, COL. 114, 494, 495, 533, 555, 635



.846



MARISOLYA⁶⁶, KIMONO-JACKE, 25.729.846,
SIZE 34 - 48, COL. 114, 494, 495, 533, 555, 635



.846



FUNCTION-BONDING RECYCLED
.889

- 114 ECRU
- 555 MOOS
- 628 DEEP BLUE

WASSERSÄULE
15000 ML



MIOLANTHA, STEPP-HOSE, 25.3700.846,
SIZE 34 - 48, COL. 114, 494, 495, 533, 555, 635

SILK-TOUCH
.869

- 208 MACCHIATO
- 494 WILDBERRY
- 495 BURGUND
- 555 MOOS
- 628 DEEP BLUE
- 990 SCHWARZ



.869



CALISTEA⁷⁸, ÄHRENSTIEP-MANTEL, 25.710.869,
SIZE 34 - 56, COL. 208, 494, 495, 555, 628, 990



.889



MAQUIRA⁹⁰, PARKER, 25.742.889,
SIZE 34 - 56, COL. 114, 555, 628



.889



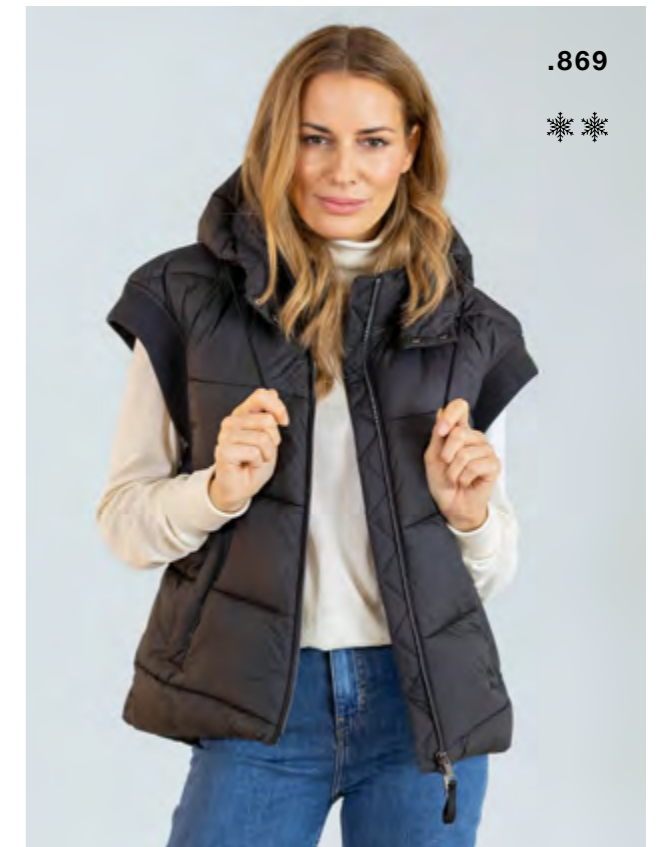
MUNITHEL⁷⁶, FUNKTIONSJACKE, 25.754.889,
SIZE 34 - 56, COL. 114, 555, 628



.869



COSMOLIA¹⁰⁵, STEPPMANTEL, 25.715.869,
SIZE 34 - 56, COL. 208, 494, 495, 555, 628, 990



.869



SELINDIS⁶⁶, WESTE, 25.734.869,
SIZE 34 - 48, COL. 208, 494, 628, 990



.869



MORIELLE⁶⁶, QUERSTIEP-JACKE, 25.702.869,
SIZE 34 - 48, COL. 208, 494, 495, 555, 628, 990



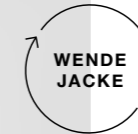
.869



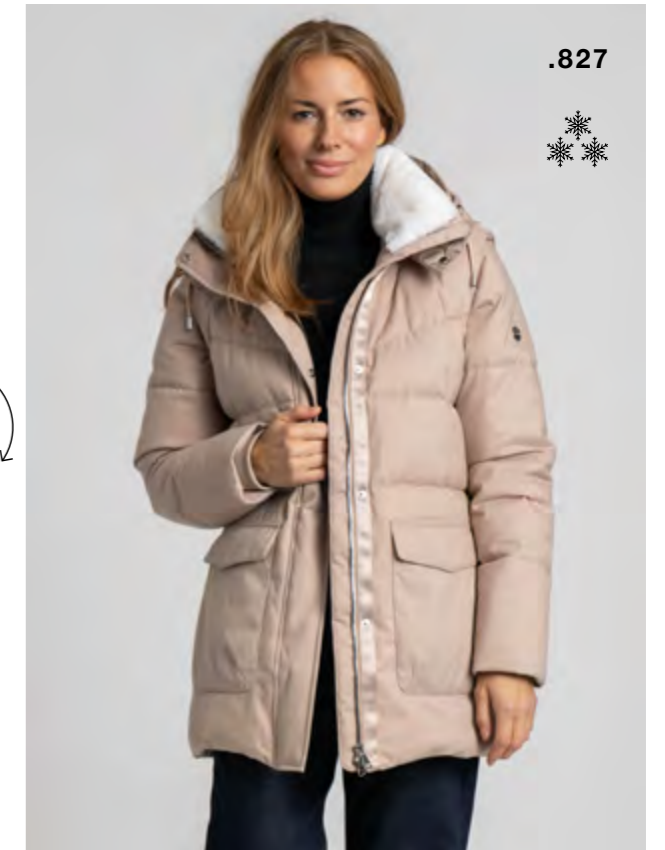
MARISELLE⁶⁴, WATTIERTE HEMDJACKE, 25.735.869,
SIZE 34 - 48, COL. 208, 494, 495, 555, 628, 990



.827



MELANTHA⁶², WENDEJACKE, 25.741.827,
SIZE 34 - 48, COL. 225, 912, 950, 983



.827



MONTALIS⁷⁶, HYBRID-PARKA, 25.740.827,
SIZE 34 - 56, COL. 225, 912, 950, 983



.869



MISTRAVIA⁶⁶, STEPPJACKE, 25.766.869,
SIZE 34 - 56, COL. 208, 494, 495, 555, 628, 990

TECHNO-WOOL RECYCLED
.827

- 225 WHISKEY
- 912 EISGRAU
- 950 ANTHRAZIT
- 983 ONYX
-
-
-

NATURAL-STRETCH RECYCLED
.830

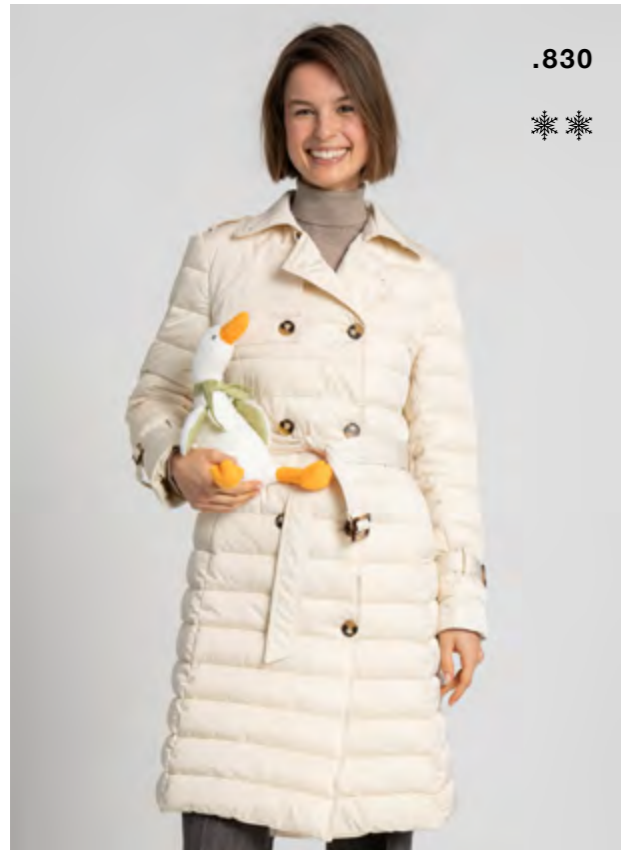
- 130 CREME
- 225 WHISKEY
- 494 WILDBERRY
- 533 FOREST
- 625 TINTE



.830



SYMARA⁵⁸, LÄNGSSTIEP JACKE, 25.764.830,
SIZE 34 - 48, COL. 130, 225, 494, 533, 625

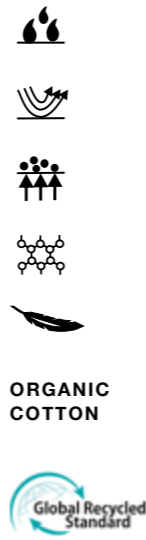


.830



SOFT-COTTON-RIPS
.914

- 208 MACCHIATO
- 494 WILDBERRY
- 533 FOREST
- 625 TINTE



ORGANIC
COTTON



SILANDRA[®], HYBRID-TRENCH, 25.765.830,
SIZE 34 - 52, COL. 130, 225, 494, 533, 625

EASY-SOFT-PRICE RECYCLED
.864

- 208 MACCHIATO
- 270 COFFEE
- 494 WILDBERRY
- 555 MOOS
- 628 DEEP BLUE
- 990 SCHWARZ



.864



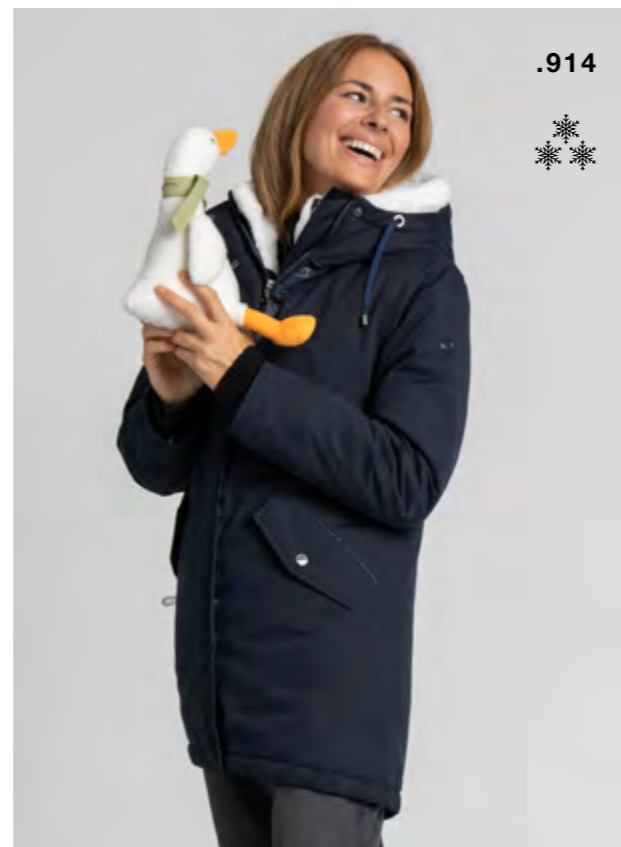
SOLUJA[®], UNTERZIEH-JACKE, 25.757.864,
SIZE 34 - 48, COL. 208, 270, 494, 555, 628, 990



.914



MAGUNE[®], HYBRID JACKE, 25.751.914,
SIZE 34 - 52, COL. 208, 494, 533, 625,



.914



MELITHIA[®], COTTON RIPS PARKA, 25.752.914,
SIZE 34 - 52, COL. 208, 494, 533, 625,



.864

ARIVELLE, SCHAL MIT FLEECE, 25.4701.864
SIZE OS, COL. 208, 270, 494, 555, 628, 990



.864



SOLUWE[®], UNTERZIEH-WESTE, 25.758.864,
SIZE 34 - 48, COL. 208, 270, 494, 555, 628, 990

CLASSIC-TWEEDPRINT
.905

202 CAMEL/SCHOKO



.905



MADRIGAL⁵⁸, REVERSIBLE PUFFER, 25.717.905,
SIZE 34 - 48, COL. 202

CLASSIC-CHECK
.913

208 MACCHIATO



494 WILDBERRY



495 BURGUND



555 MOOS



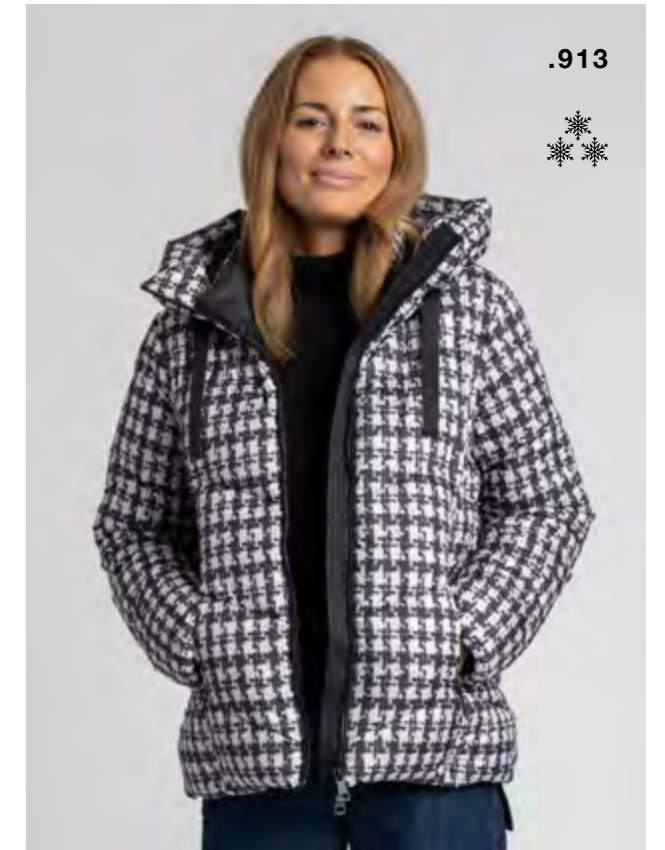
628 DEEP BLUE



800 SCHWARZ-WEISS



990 SCHWARZ



.913



MORENELLE⁶⁸, STEPPJACKE, 25.733.913,
SIZE 34 - 52, COL. 208, 494, 555, 628, 800, 990



.905



MERVESIA⁹⁰, REVERSMANTEL, 25.723.905,
SIZE 34 - 48, COL. 202



FIONA

EFFECT-TWEEDPRINT
.906

231 COGNAC/BRAUN



.906



SELESTINA⁶⁸, HYBRID PUFFER, 25.718.906,
SIZE 34 - 48, COL. 231

TECHNO-DENIM
.887

● 983 ONYX



.887



MARQUSSA⁷², HYBRID-PARKA, 25.724.887,
SIZE 34 - 48, COL. 983

TECHNO-KNIT
.835

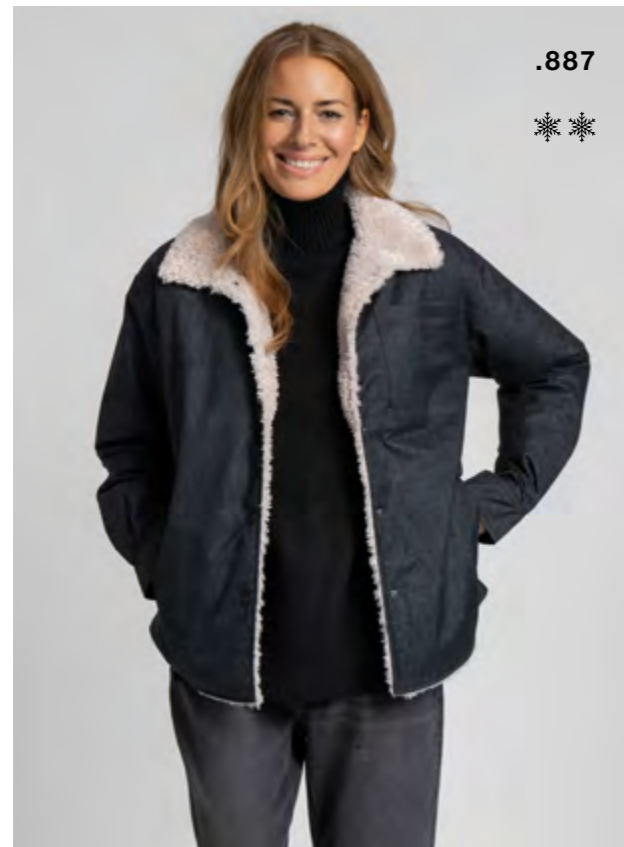
● 990 SCHWARZ



.835



CELESIONA¹⁰⁵, STEPPMANTEL, 25.727.835,
SIZE 34 - 56, COL. 990



.887



SORINA⁶⁸, PADDED OVERSHIRT, 25.719.887,
SIZE 34 - 48, COL. 983



.887



CASTALUNA¹¹⁰, PUFFERMANTEL, 25.721.887,
SIZE 34 - 56, COL. 983

CRASH-TECH
.912

● 533 FOREST

● 990 SCHWARZ



.912

UMHÄNGETASCHE
SIZE OS, COL. 533, 990

TECHNO-STRUCTURE
.908

208 MACCHIATO



494 WILDBERRY



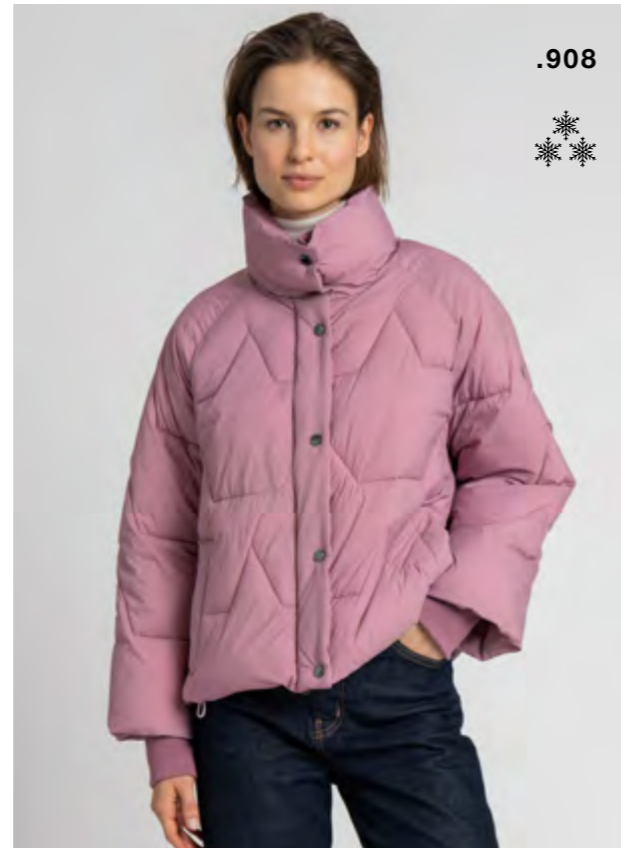
533 FOREST



625 TINTE



BIONIC
FINISH^{ECO}



.908



MIRAZYEL⁶², ZACKENSTEPP-JACKE, 25.745.908,
SIZE 34 - 52, COL. 208, 494, 533, 625



.908



CALYThERA¹¹⁰, PUFFERMANTEL, 25.720.908,
SIZE 34 - 52, COL. 208, 494, 533, 625

GLAMOUR-CHECK
.903

110 OFFWHITE



990 SCHWARZ



.908



CALIRA⁹⁰, ZACKENSTEPP-MANTEL, 25.746.908,
SIZE 34 - 52, COL. 208, 494, 533, 625



.908



MEWISIENNE⁹⁰, LONG-WESTE, 25.760.908,
SIZE 34 - 52, COL. 208, 494, 533, 625



.903



CREPELLA⁷², ÄHRENSTEPP-JACKE, 25.738.903,
SIZE 34 - 52, COL. 110, 990



.903



CLARIMONT⁹⁸, ZACKEN-STEPPMANTEL, 25.737.903,
SIZE 34 - 52, COL. 110, 990

LAMBSKIN-BONDING
.847

130 CREME

208 MACCHIATO

264 NOUGAT/BEIGE

270 COFFEE



.847



WENDE
MANTEL

MODANIQUE¹⁰⁵, FAKE-FUR-MANTEL, 25.747.847,
SIZE 34 - 48, COL. 130, 208, 270



.847

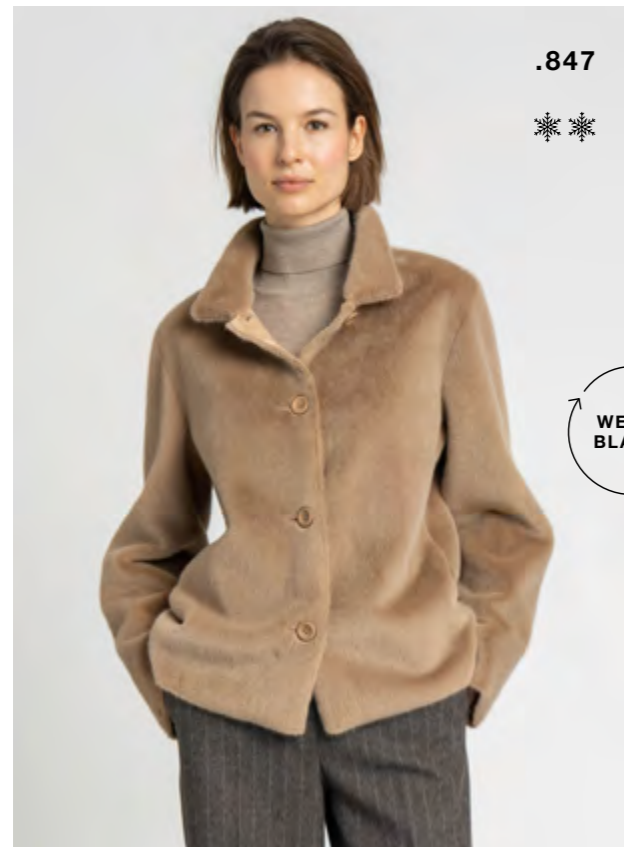
.848

CAP, SCHAL, HANDSCHUHE

LAMB-FAKEFUR
.848

130 CREME

270 COFFEE



.847



WENDE
BLAZER

SAPHIRELLE⁶², WENDE-BLAZER, 25.755.847,
SIZE 34 - 48, COL. 130, 208, 270



.847



WENDE
WESTE

MAGANELLE⁹⁰, BONDING-WESTE, 25.756.847,
SIZE 34 - 48, COL. 130, 208, 270



.848



SERAFINA⁵⁶, MINK-FUR-JÄCKCHEN, 25.750.848,
SIZE 34 - 48, COL. 130, 270



.848



WENDE
JACKE

MARCELIN⁷⁶, WENDE-LONGJACKE, 25.753.848,
SIZE 34 - 48, COL. 130, 270

CHECK-BONDING
.916

- 130 CREME
- 208 MACCHIATO
- 264 NOUGAT/BEIGE
- 270 COFFEE



.916



WENDE
JACKE

SIVELLA⁶⁰, FAKE-FUR-JACKE, 25.748.916,
SIZE 34 - 48, COL. 130, 208, 264, 270



.909



CASSANDRIA⁹⁵, HYBRID MANTEL, 25.730.909,
SIZE 34 - 52, COL. 130, 270

SILKY SOFT
.886

- 130 CREME
- 208 MACCHIATO
- 270 COFFEE
- 494 WILDBERRY
- 495 BURGUND
- 625 TINTE



.886

MISABU, BLUSE OHNE KNOPFLEISTE, 25.771.886,
SIZE 34 - 52, COL. 130, 208, 270, 494, 495, 625

TEDDY
.909

- 130 CREME
- 270 COFFEE



.909



WENDE
JACKE

MAVENTA⁶², REVERSIBLE JACKE, 25.731.909,
SIZE 34 - 52, COL. 130, 270



.886

MIKABU, BLUSE MIT KNOPFLEISTE, 25.772.886,
SIZE 34 - 52, COL. 130, 208, 270, 494, 495, 625

FAKE-WOOL + STEPP
.917

- 130 CREME 🔥
- 270 COFFEE 🏔️
- 494 WILDBERRY 👥
- 625 TINTE



.917
❄️❄️

SERENOVA⁵⁸, FAKE-WOOL-JACKE, 25.767.917,
SIZE 34 - 48, COL. 130, 270, 494, 625



.917
❄️❄️

MELIMARA⁹⁰, FAKE-WOOL MANTEL, 25.763.917,
SIZE 34 - 52, COL. 130, 270, 494, 625

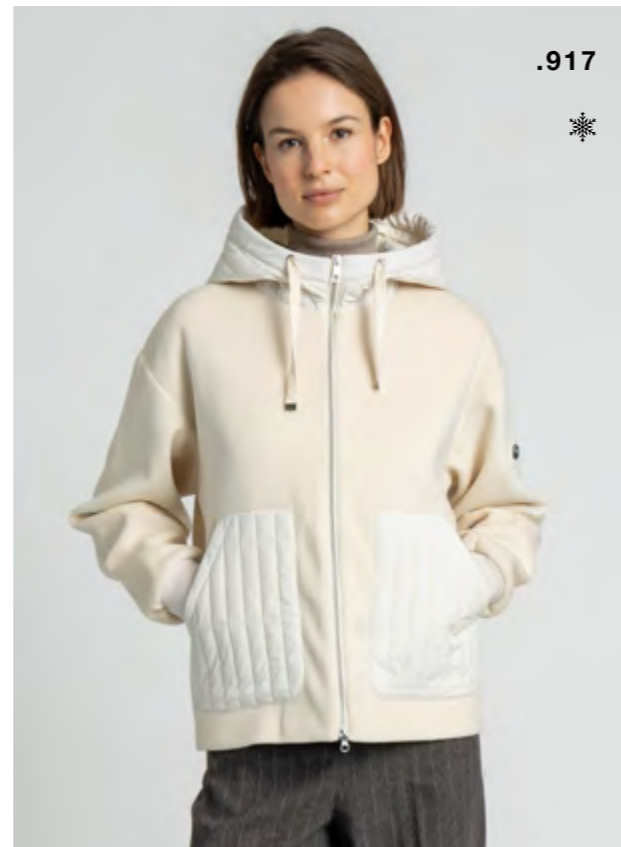
KNIT-FAKE-WOOL
.918

- 130 CREME 🔥
- 270 COFFEE 🏔️
- 625 TINTE 👥



.917
❄️

SERENITA⁵⁶, FAKE-WOOL BOMBER, 25.768.917,
SIZE 34 - 48, COL. 130, 270, 494, 625



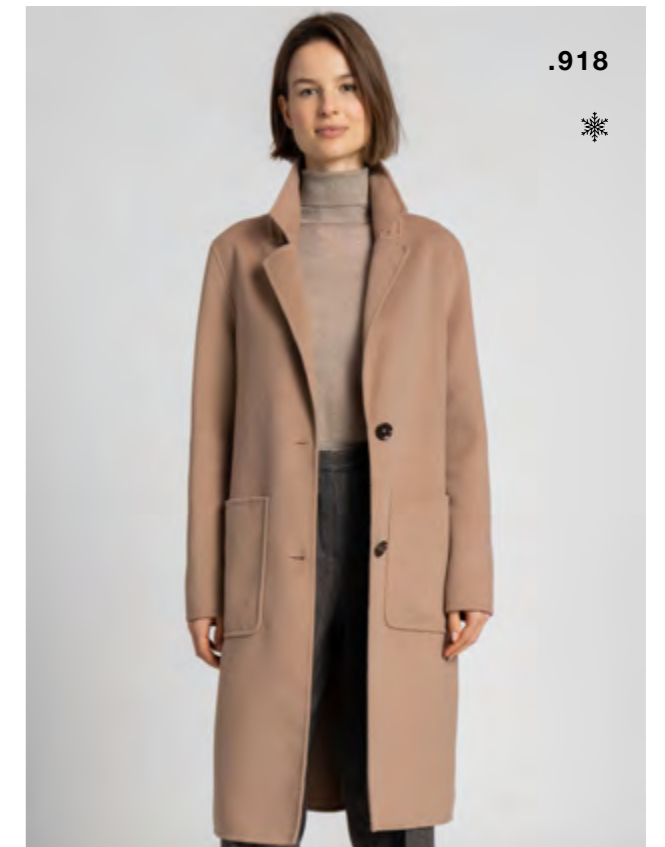
.917
❄️

MELINDORA⁶⁰, FAKE-WOOL-JACKE, 25.762.917,
SIZE 34 - 52, COL. 130, 270, 494, 625



.918
❄️


MELEONA⁶⁴, FAKE-WOOL HEMD, 25.761.918,
SIZE 34 - 52, COL. 130



.918
❄️

SAEVIRA¹⁰², FAKE-WOOL BLAZERMANTEL, 25.773.918,
SIZE 34 - 52, COL. 270

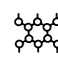
 WATERREPELLENT
WASSERABWEISEND

 WATERPROOF
WASSERDICHT

 WINDPROOF
WINDDICHT

 BREATHABLE
ATMUNGSAKTIV


 HARMFUL
MATERIALS TESTED


 FIBRE FILLER
(DOWNFREE)
FLOCK-FÜLLUNG
(DAUNENFREI)


 LIGHTWEIGHT
LEICHTGEWICHT

 EASY CARE
PFLEGELEICHT

 MEMBRANE FABRIC
FUNKTIONS-MEMBRANE

 10° GRAD
BIS 0° GRAD

 5° GRAD
BIS -5° GRAD

 -5° GRAD
BIS -15° GRAD



BIONIC FINISH /
SCHMUTZ-
ABWEISENDE
AUSRÜSTUNG



RECYCLED FABRIC
RECYCELTE STOFFE



FUR FREE RETAILER
PELZFREI

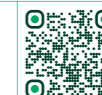


IMPRESSUM

Fotografie (Lookbook) Arton Sefa
Fotografie (Workbook) Matthias Somberg
Organisation/Styling Antje Winter
Haare/Make-up Sigi Kumpfmüller
Gestaltung Victoria Keller
Druck F&W Druck- & Mediacenter GmbH



Rohstoffe
Anlieferung
Produktion



g CO₂e pro
Druckprodukt
810,77



WEGA GMBH BEKLEIDUNGSFABRIK
Geschäftsführer Karl-Friedrich Schielmann
Eingetragen im Handelsregister
HR Traunstein / HRB 1465 / DE 131 201 857



INSULATION EXPERTS SINCE 1972



WEGA-GREEN-GOOSE GMBH

Fabrikstraße 12 – 23
D-83101 Rohrdorf-Thansau

+49 (0)8031 275 30
verkauf@wega-green-goose.eu

WWW.WEGA-GREEN-GOOSE.EU